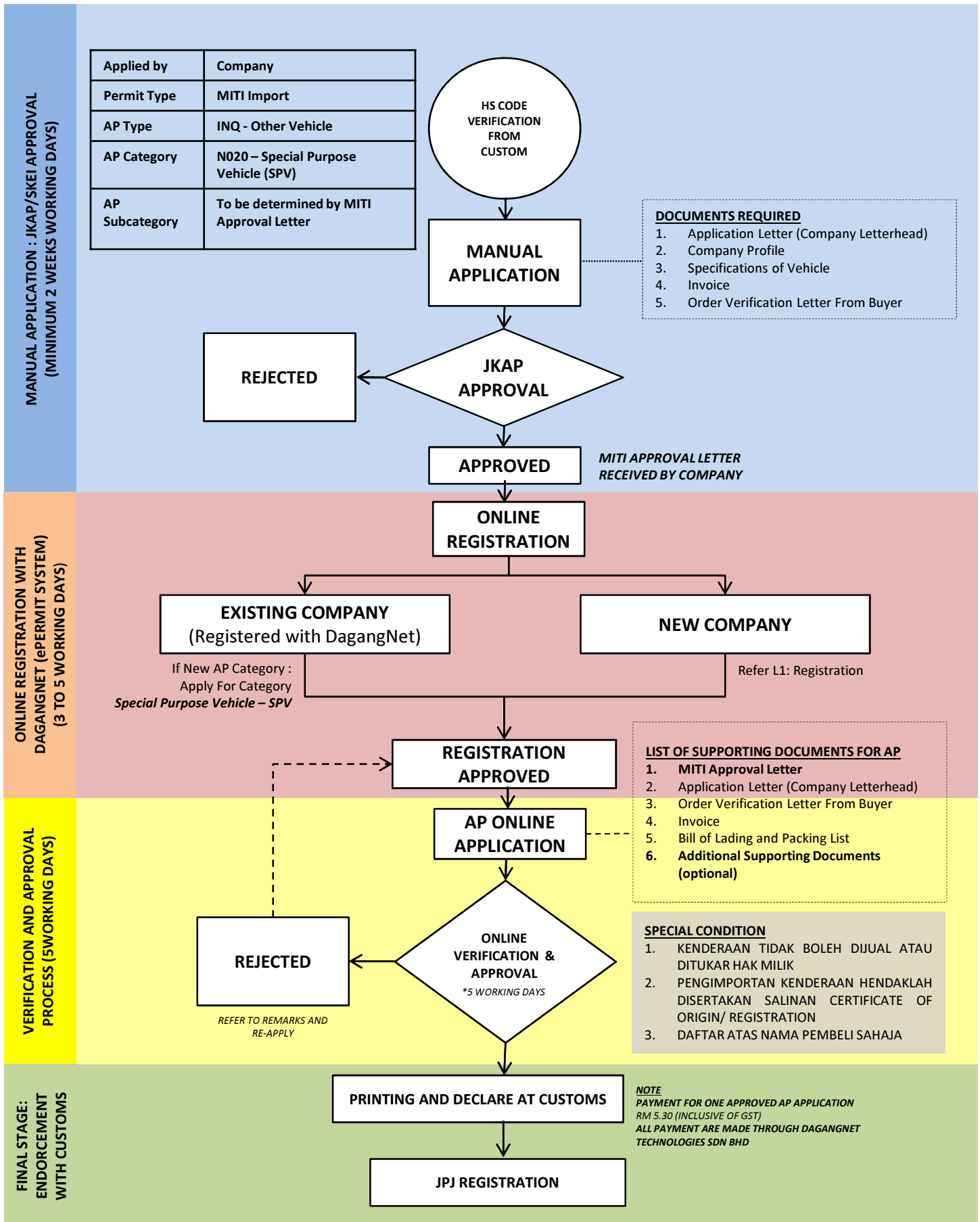


## FLOW CHART FOR APPLICATION AP TYPE (INQ) – OTHER VEHICLE PERMANENT IMPORT - SPECIAL PURPOSE VEHICLE (SPV)



MANUAL APPLICATION : JKAP/SKEI APPROVAL  
(MINIMUM 2 WEEKS WORKING DAYS)

ONLINE REGISTRATION WITH  
DAGANGNET (ePERMIT SYSTEM)  
(3 TO 5 WORKING DAYS)

VERIFICATION AND APPROVAL  
PROCESS (5WORKING DAYS)

FINAL STAGE:  
ENDORSEMENT  
WITH CUSTOMS