

ESG NEWSLETTER



Volume 6/2023

October 2023

Launch of the i-ESG Framework

Ministry of Investment, Trade & Industry (MITI) launched the National Industry Environmental, Social and Governance Framework (i-ESG Framework) on 2 October 2023 to facilitate the adoption and enhancement of ESG practices within the manufacturing sector.

The framework consists of 17 strategies, 50 deliverables and 6 key enablers, aimed at providing guidance for the manufacturers, specially Micro, Small, and Medium Enterprises (MSMEs) to drive the ESG agenda during the Phase 1.0 – ‘Just Transition’



i-ESGReady and i-ESGStart

The i-ESG Framework Phase 1.0 comes with an **ESG Readiness Assessment (i-ESGReady)** to assist companies in understanding and evaluating their current ESG adoption level, and the **i-ESG Starter Kit (i-ESGStart)**, which is a clear and user-friendly, step-by-step guide with practical examples, as well as calculation methods and templates to facilitate companies' sustainability reporting.

All About Q4 2023...

The i-ESG division has conducted:

- a series of clinics to introduce the i-ESGStart to empower and guide the MSMEs in producing their sustainability report;
- “KenalESG” – outreach programmes to raise ESG awareness and introduce the i-ESG Framework to industries; and
- knowledge sharing session to government officers through INTAN webinar.



Click here for more information on the i-ESG Framework
<https://www.miti.gov.my/index.php/pages/view/9849?mid=1282>

ESG IS HERE TO STAY



SME ESG ADOPTION IN MALAYSIA - TRANSITION TO SUSTAINABLE LOW-CARBON ECONOMY

Dr. Jessica was one of the speakers for the forum titled 'SME ESG Adoption in Malaysia - Transition to Sustainable Low-Carbon Economy' organised by the UOB Bank on 18 October 2023. This event focused on deliberating available resources and mechanisms for SMEs to facilitate the shift towards more environmentally and socially responsible business practices.

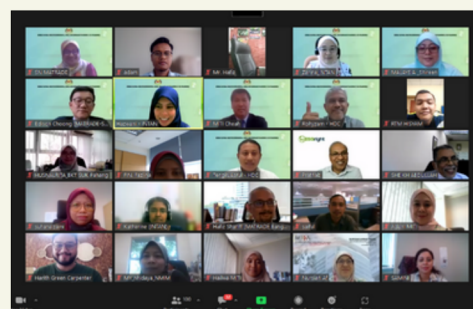


SEMINAR ESG: THE WAY FORWARD FOR TIMBER INDUSTRY

The Malaysia Timber Industry Board organised an ESG seminar titled The Way Forward In Timber Industry for the industry players at the Southern Region on 19 October 2023. Dr. Jessica presented on i-ESG Framework to help the timber industry players to manage risks and opportunities while prioritising the company's own environmental, social and governance care.

WEBINAR ON NATIONAL INDUSTRY ENVIRONMENTAL, SOCIAL AND GOVERNANCE FRAMEWORK (I-ESG FRAMEWORK)

Institut Tadbiran Awam Negara (INTAN), in collaboration with MITI, have successfully organised a webinar titled "National Environmental, Social, and Governance Framework (i-ESG Framework)" on 31 October 2023. The webinar garnered a positive response, drawing the engagement of 110 participants from various levels of civil servants, representing ministries and government agencies. The webinar was organised as an effort to provide exposure to civil servants, who are the policy makers and implementers on the importance of ESG and the government's commitment towards sustainability and the environment. A good understanding of the ESG can assist them in planning and implementing government policies in line with ESG standards that align with the aspirations of Malaysia Madani, which also emphasises sustainability.



'KENALESG' AND GSEP PROGRAMME FOR THE EASTERN REGION



The Industry Environmental, Social, and Governance (i-ESG) Division, MITI organised an ESG outreach programme in the East Coast of Malaysia on 30 October 2023, as an effort to disseminate the latest information related to sustainability or ESG to industry players as well as local authorities. The programme received a very positive response from 145 participants from the states of Pahang, Kelantan, and Terengganu.

This programme was designed to raise awareness of ESG practices in the manufacturing sector and to strengthen sustainability agendas, especially in the contexts of investment, trade and industry. Apart from assessing the level of companies' current readiness to adapt ESG practices in their operations, this platform enabled MITI to receive direct input and feedback from the industry players on ways to improve existing guidelines and effective ways of aiding the transition towards enhancing ESG compliance practices by industries. The Kenalesg programme comprised of three sessions, starting with a plenary session by Dr. Jessica from MITI, introducing the i-ESG Framework, followed by a forum that featured four panellists from MATRADE, MGTC, CIMB and the Academy of ESG and Sustainability which shared information related to sustainability from their respective expertise and backgrounds. The i-ESG Clinic was the final session of the programme which involved technical sharing on ways to utilise the i-ESGStart, a convenient and comprehensive reference for industries to initiate their ESG reporting.



SEMINAR ESG: THE WAY FORWARD FOR TIMBER INDUSTRY

Dr. Jessica was one of the panels at the Roundtable Discussion on Directors' Duties towards Labour and Environmental Rights and Drafting Amendments to Sections 213 & 253 (3) Companies Act 2016 that was held on 17 October 2023. The programme equipped participants with knowledge on directors' duties regarding labour and environmental rights under the Malaysian law and the current initiatives undertaken by the government and regulators on this topic.

ESG QUOTE OF THE MONTH

"INNOVATIVE SOLUTIONS MUST BE ADOPTED TO ADDRESS OUR PLANET'S MOST PRESSING ENVIRONMENTAL ISSUES." - CAMERON SINCLAIR