



MINISTRY OF INTERNATIONAL TRADE AND INDUSTRY

Weekly BULLETIN

VOLUME 611

10 NOVEMBER 2020 | NO. ISSN :2180-0448

YB DATO' SERI MOHAMED AZMIN ALI JOINS ASEAN LEADERS TO PLEDGE FOR UNITY TO FACE TOUGH CHALLENGES AHEAD AT THE 37TH ASEAN SUMMIT AND RELATED MEETINGS



ASEAN Leaders are all set to convene at the 37th ASEAN Summit and Related Meetings, in a virtual manner, from 9 – 15 November 2020. Hosted by Vietnam who is the ASEAN Chair for 2020, Senior Minister and Minister of International Trade and Industry YB Dato' Seri Mohamed Azmin Ali will be participating in the Summit, alongside Foreign Minister YB Datuk Seri Hishammuddin Tun Hussein. The Malaysian delegation at the virtual Summit will be led by Prime Minister YAB Tan Sri Muhyiddin Yassin.

Central to the outcome of the 37th ASEAN Summit is the signing of the Regional Comprehensive Economic Partnership (RCEP) Agreement, making this grouping the largest FTA in the world covering nearly half of the world's population while contributing one third of the world's GDP. The RCEP Agreement, which has been in negotiation since 2013, would enhance regional economic integration, promote the flow of investments and strengthen global supply chains.

With ASEAN Member States still battling the COVID-19 pandemic, the Summit will therefore be an ideal platform to discuss ways and means to deal with the health and economic challenges. Under the theme "Cohesive and Responsive", Member States will also focus on how best to enhance unity, cooperation and solidarity towards regional economic integration.

Prior to the Leaders' Summit, the Economic Ministers will convene at the ASEAN Economic Community (AEC) Council Meeting and discuss tangible solutions and the way forward to support the recovery of the regional economy by keeping markets open for trade and investment. In this regard, the proposed ASEAN Comprehensive Recovery Framework (ACRF)

and its implementation plan, will be submitted for the ASEAN Leaders' endorsement at the Summit. According to Dato' Seri Azmin Ali, "Our expectation is for the ACRF to be implemented so as to provide sustainable solutions to economic recovery made all the more imperative because of COVID-19."

The meetings will also feature customary Summits with ASEAN Dialogue Partners, namely the 23rd ASEAN-China Summit, the 23rd ASEAN-Japan Summit, the 21st ASEAN-ROK Summit, the 8th ASEAN-US Summit, the ASEAN-New Zealand Leaders' Summit, the 2nd ASEAN-Australia Leaders' Summit, the 23rd ASEAN Plus Three Summit, the 15th East Asia Summit, the 11th ASEAN-UN Summit, and the 17th ASEAN India Summit. These Summits with Dialogue Partners are expected to advance further cooperation in multiple areas, with emphasis on stretching trade relations especially amidst the COVID-19 pandemic.

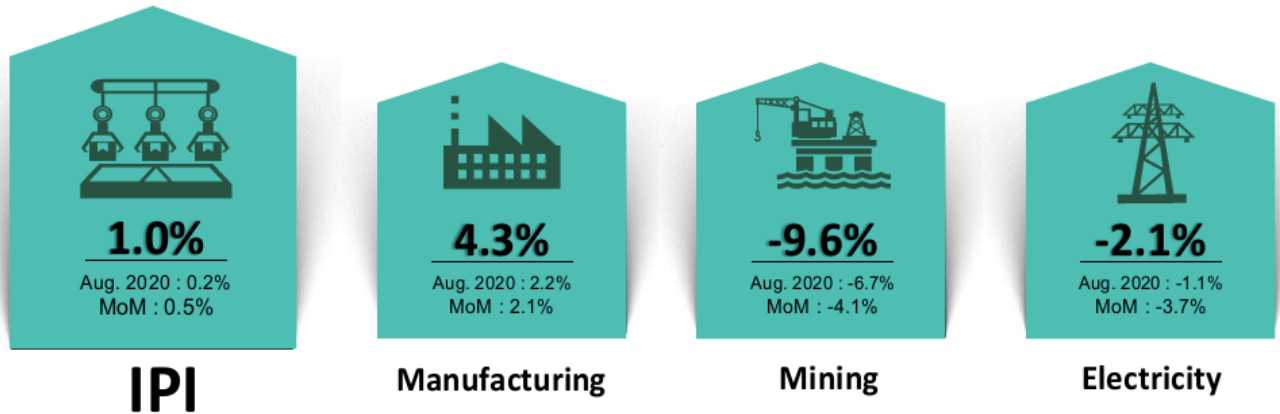
The 2020 ASEAN Business Investment Summit (BIS) is also scheduled to take place in conjunction with the 37th ASEAN Summit, with the theme "Digital ASEAN: Sustainable and Inclusive." The 2020 ASEAN BIS is expected to host not only the ASEAN Leaders and Dialogue Partners, but also ASEAN and global CEOs, prominent decision makers, think tanks as well as thought leaders. The 2020 ASEAN BIS will culminate with the ASEAN Business Award event which will honour excellent businesses across the region, in particular, enterprises that have shown the spirit to overcome challenges in these trying times.

MINISTRY OF INTERNATIONAL TRADE & INDUSTRY
8 NOVEMBER 2020

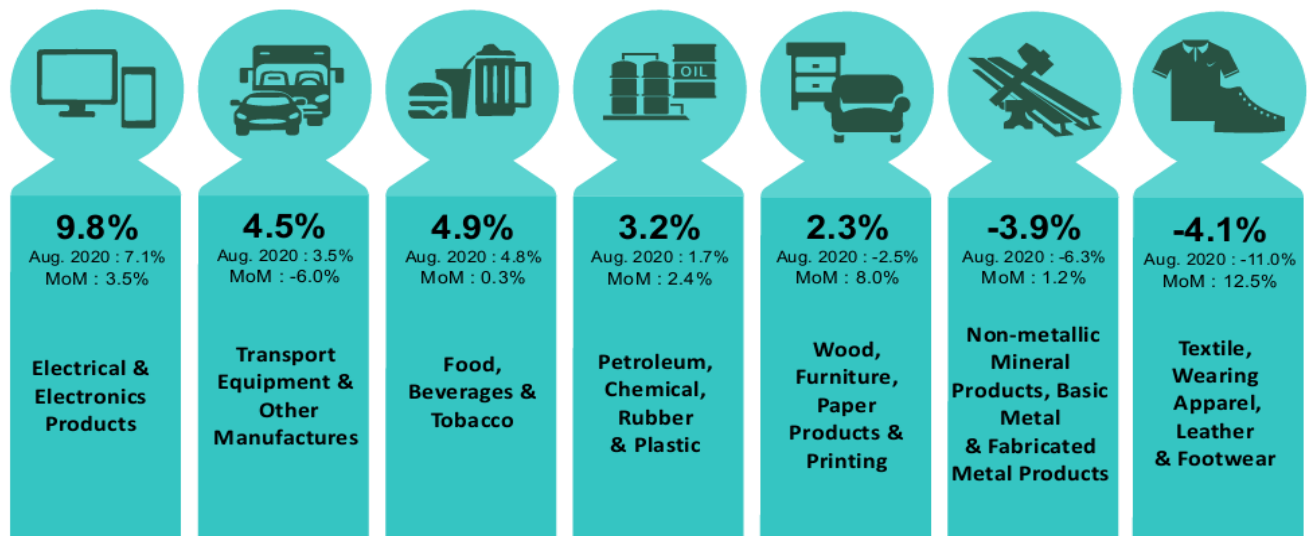
Media Release

MALAYSIA'S INDUSTRIAL PRODUCTION INDEX (IPI) SEPTEMBER 2020

The Industrial Production Index (IPI) increased 1.0 per cent in September 2020 as compared to the same month of the previous year. The increment of IPI in September 2020 was driven by the positive growth of 4.3 per cent in Manufacturing index. Meanwhile the Mining and Electricity index recorded the decrease of 9.6 per cent and 2.1 per cent respectively.



MANUFACTURING

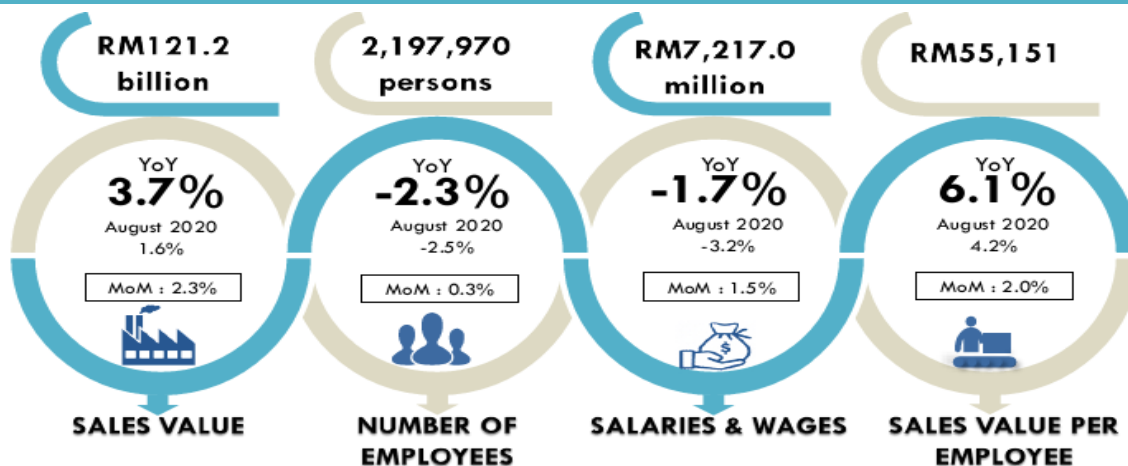


Note:

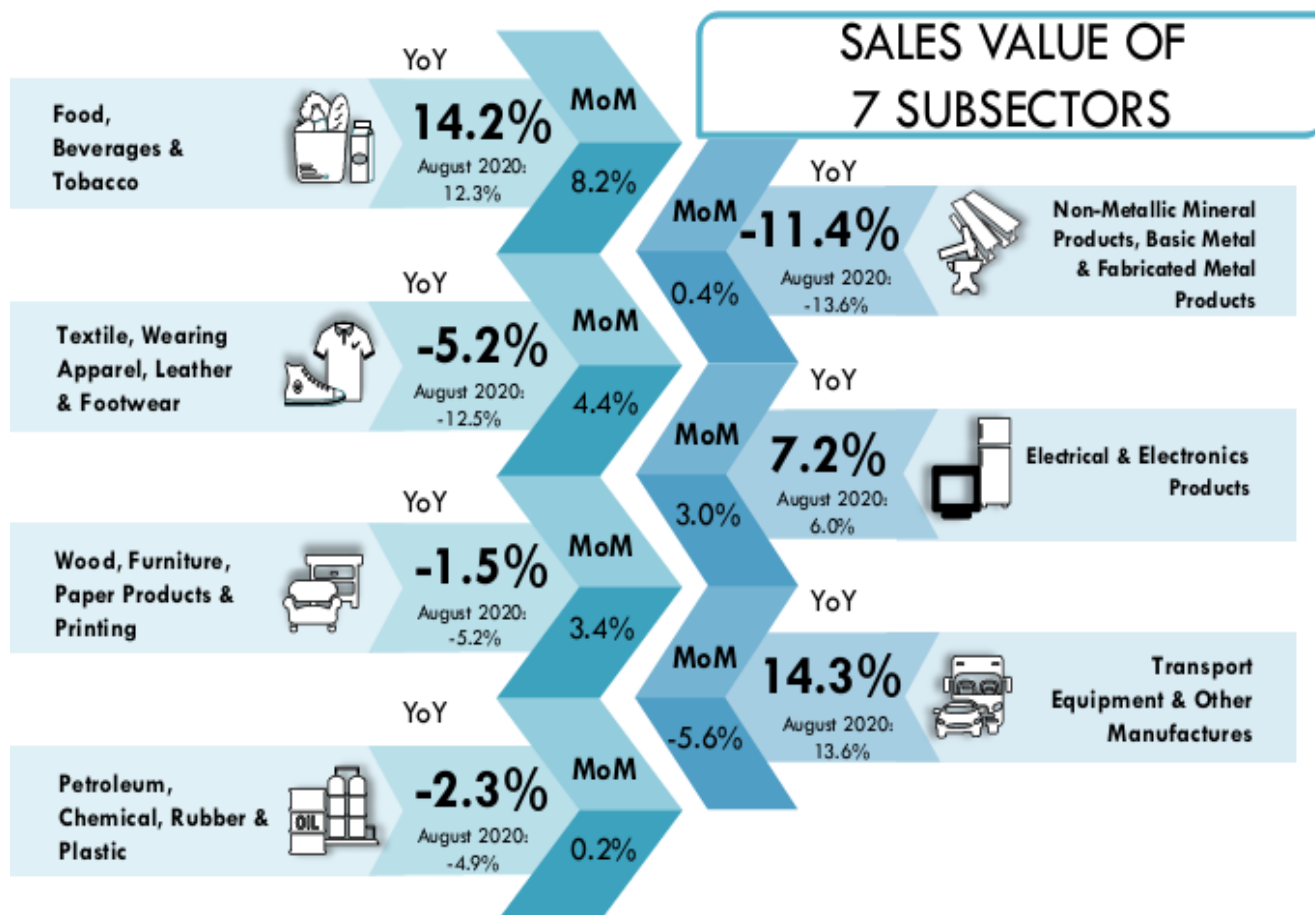
Percentage refers to the change in Month-on-Month (MoM) and Year-on-Year (YoY)

Source: Department of Statistics, Malaysia

MONTHLY MANUFACTURING STATISTICS, MALAYSIA SEPTEMBER 2020



- Malaysia's Manufacturing sales in September 2020 stood at RM121.2 billion, grew 3.7 per cent as compared to RM116.8 billion reported a year ago. The year-on-year increase in September 2020 was driven by Transport Equipment & Other Manufactures Products (14.3%), Food, Beverages & Tobacco Products (14.2%) and Electrical & Electronics Products (7.2%).
- Total employees engaged in the Manufacturing sector in September 2020 was 2,197,970 persons, a decrease of 2.3 per cent as compared to 2,248,761 persons in September 2019.
- Salaries & wages paid amounted to RM7,217.0 million, contracted by 1.7 per cent or RM124.3 million in September 2020 as against the same month of the preceding year. Meanwhile, salaries & wages paid in September 2020 increased by 1.5 per cent (RM104.4 million) as compared to August 2020.



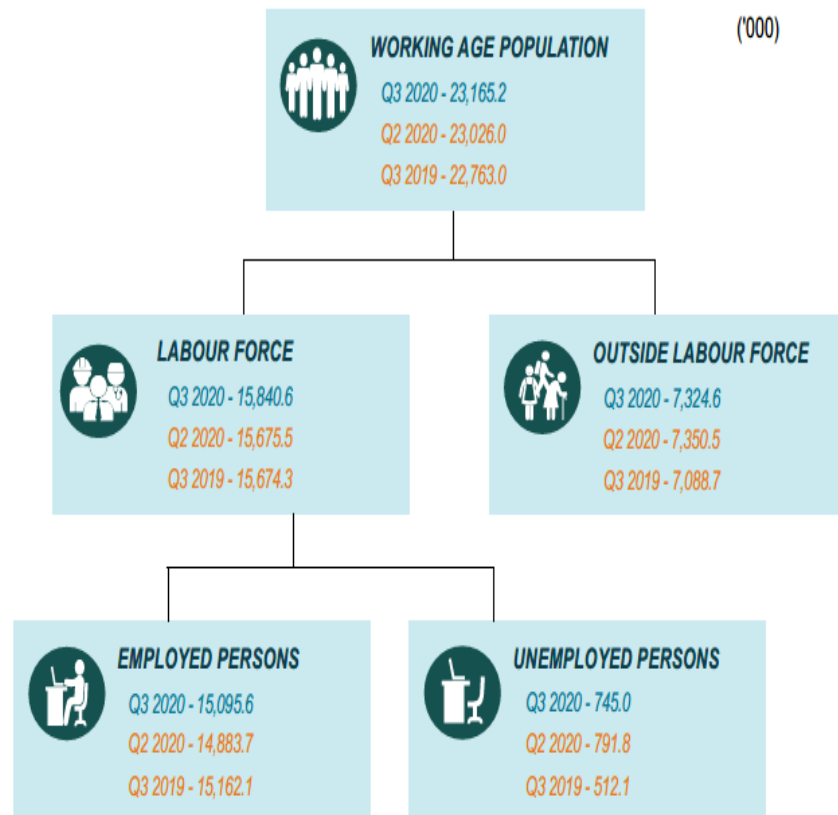
Note:

Percentage refers to the change in Month-on-Month (MoM) and Year-on-Year (YoY)

Source: Department of Statistics, Malaysia

LABOUR FORCE IN MALAYSIA THIRD QUARTER OF 2020

Principal Statistics of Labour Force, Malaysia, Third Quarter (Q3) 2019, Second Quarter (Q2) 2020 & Third Quarter (Q3) 2020



Labour force increased 1.1 per cent to 15.84 million persons while employed persons decreased by 0.4 per cent to 15.10 million persons as compared to the third quarter of 2019.

Quarter-on-quarter, labour force and employed persons inclined 1.1 per cent and 1.4 per cent respectively as against previous quarter.

Labour force participation rate (LFPR) in the third quarter of 2020 rose 0.3 percentage points to 68.4 per cent from 68.1 per cent in second quarter of 2020. The employment-to-population ratio increased by 0.6 per cent to 65.2 per cent as compared to second quarter 2020. Meanwhile during this quarter outside labour force stood at 31.6 per cent.

The unemployment rate dropped 0.4 percentage points quarter-on-quarter to 4.7 per cent as the number of unemployed persons reduced by 46.8 thousand to record 745.0 thousand persons.

Notes:

Working age population : All persons aged between 15 to 64 years who are either in the labour force or outside the labour force.

Labour force: All persons in the working age who are either employed or unemployed.

Employed; All persons who, at any time during the reference week worked at least one hour for pay, profit or family gain either as employers, employees, own account workers or unpaid family workers.

Unemployed: All persons who did not work during the reference week and are classified into two groups that are actively unemployed and inactively unemployed.

Outside labour force : All persons not classified as employed or unemployed are classified as outside labour force. This category consists of housewives, students (including those going for further studies), retirees, disabled person and those not interested in looking for jobs.

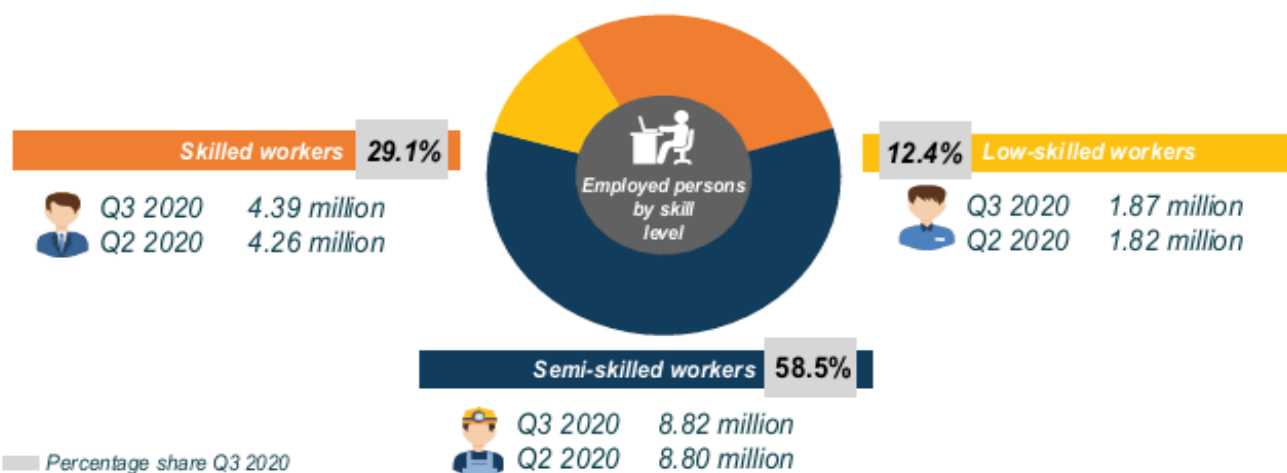
Source: Department of Statistics, Malaysia

MAIN INDICATOR BY SEX, MALAYSIA, THIRD QUARTER (Q3) 2019 SECOND QUARTER (Q2) 2020 & THIRD QUARTER (Q3) 2020

Main indicator	Q3 2019	Q2 2020	Q3 2020
Male			
Labour force ('000)	9,529.1	9,583.0	9,689.3
Employed ('000)	9,228.7	9,129.1	9,229.8
Outside labour force ('000)	2,252.5	2,364.7	2,342.5
Labour force participation rate (%)	80.9	80.2	80.5
Employment to population ratio (%)	78.3	76.4	76.7
Female			
Labour force ('000)	6,145.2	6,092.5	6,151.3
Employed ('000)	5,933.5	5,754.7	5,865.8
Outside labour force ('000)	4,836.2	4,985.8	4,982.1
Labour force participation rate (%)	56.0	55.0	55.3
Employment to population ratio (%)	54.0	51.9	52.7

In this quarter, the employment to population ratio for male increased 0.3 percentage points to 76.7 per cent while for female rose 0.8 percentage points to 52.7 per cent as compared to the second quarter of 2020.

EMPLOYED PERSONS BY SKILL LEVEL, MALAYSIA, SECOND QUARTER (Q2) 2020 & THIRD QUARTER (Q3) 2020



The semi-skilled workers dominated the labour market by 58.5 per cent followed by skilled workers (29.1%) and low-skilled workers (12.4%) in the third quarter of 2020.

The number of skilled workers increased by 13.0 thousand persons to 4.39 million persons as compared to 4.26 million persons in the second quarter of 2020.

Meanwhile, the composition of low-skilled workers also increased from 12.3 per cent in second quarter of 2020 to 12.4 per cent in third quarter of 2020.

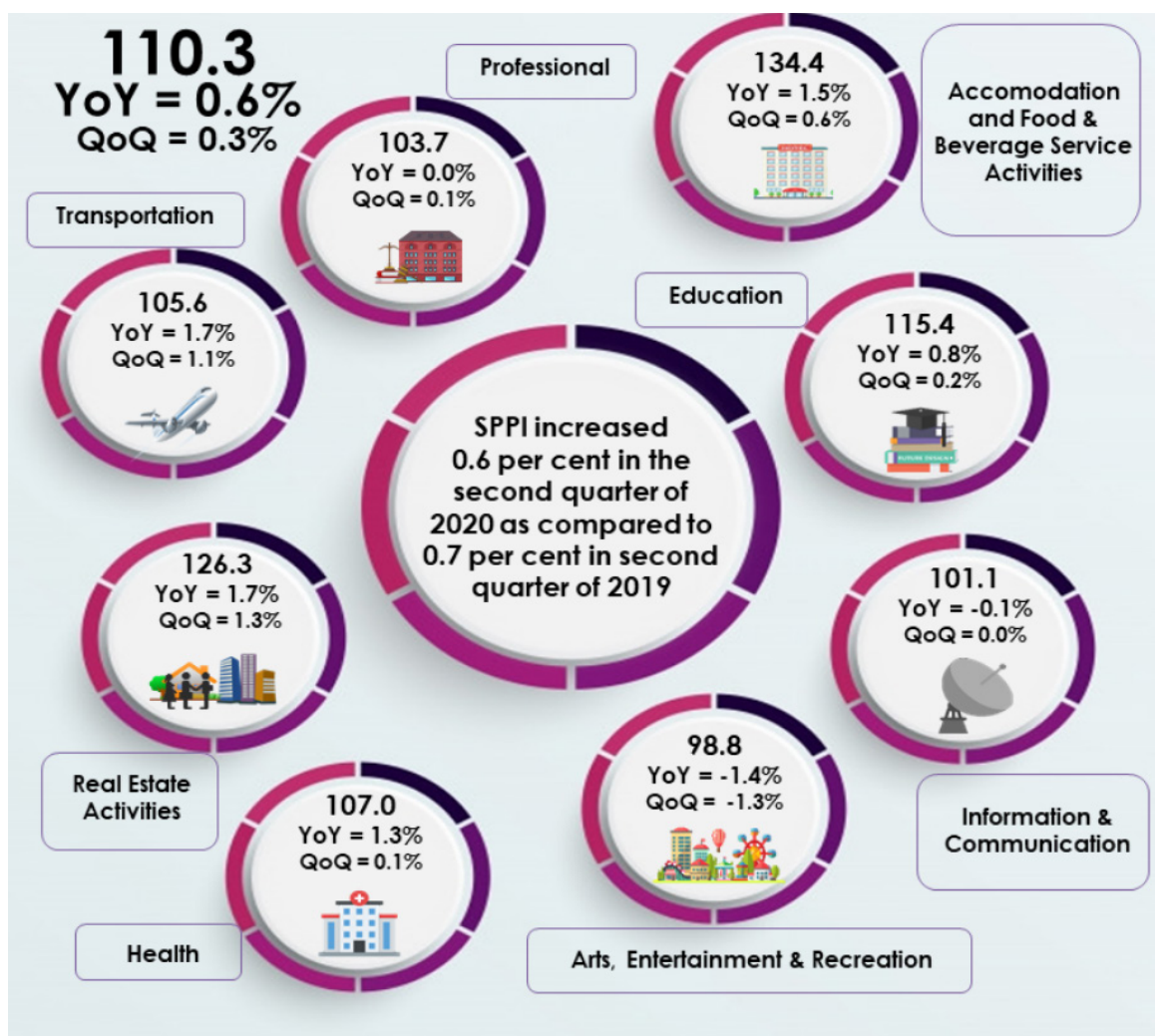
Source: Department of Statistics, Malaysia

SERVICES PRODUCER PRICE INDEX THIRD QUARTER OF 2020

The Services Producer Price Index (SPPI) for the third quarter of 2020 increased 0.6 per cent to 110.3 as compared to 109.6 in the same quarter of the preceding year.

The main sub-sectors that contributed to the increase were Transportation (1.7%), Real Estate Activities (1.7%), Accommodation and Food & Beverage Service Activities (1.5%), Health (1.3%) and Education (0.8%).

However, the index for Arts, Entertainment & Recreation and Information & Communication decreased by 1.4 per cent and 0.1 per cent respectively. Index for Professional remained unchanged.



Note:

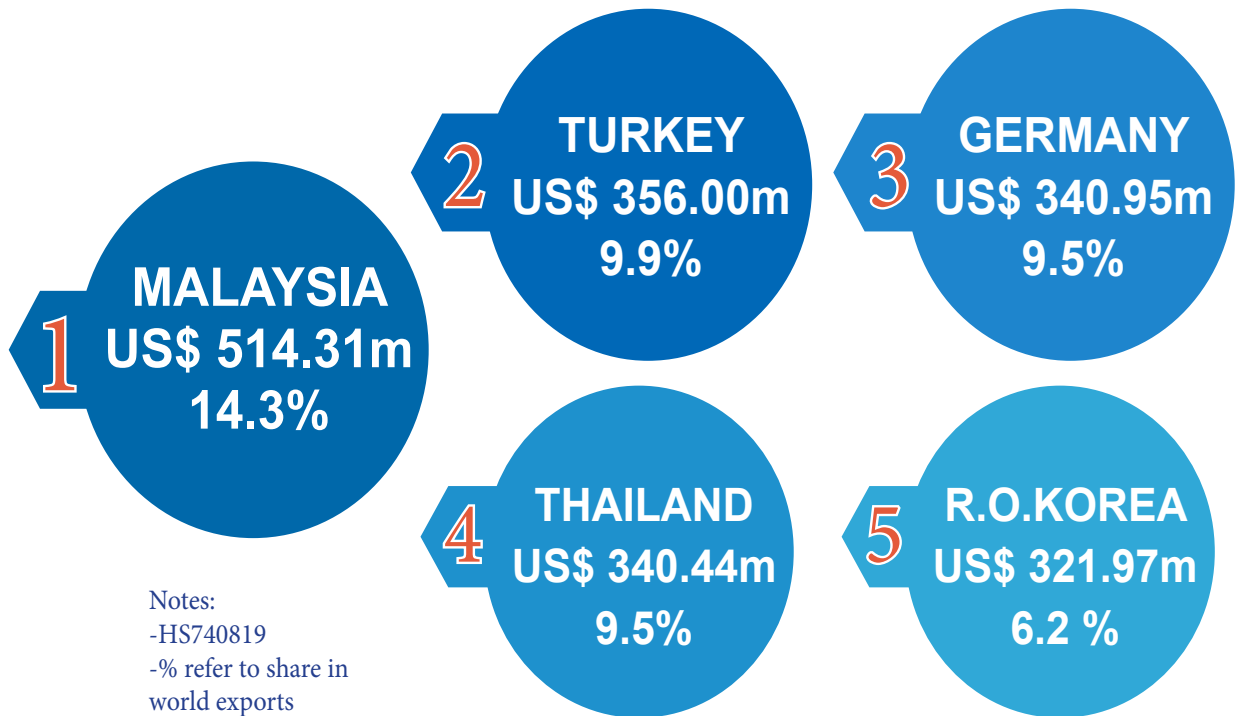
YoY : Year-on-Year

QoQ: Quarter on Quarter

Source: Department of Statistics, Malaysia

WORLD LARGEST EXPORTERS OF WIRE OF REFINED COPPER, WITH A MAXIMUM CROSS-SECTIONAL DIMENSION OF ≤ 6 MM

In 2019, Malaysia's export of Wire of refined copper, with a maximum cross-sectional dimension of ≤ 6 mm recorded US\$ 514.31 Million which was 14.3% share of the world exports



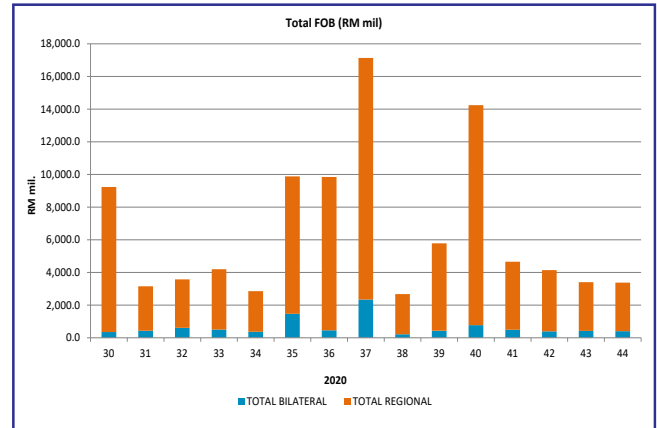
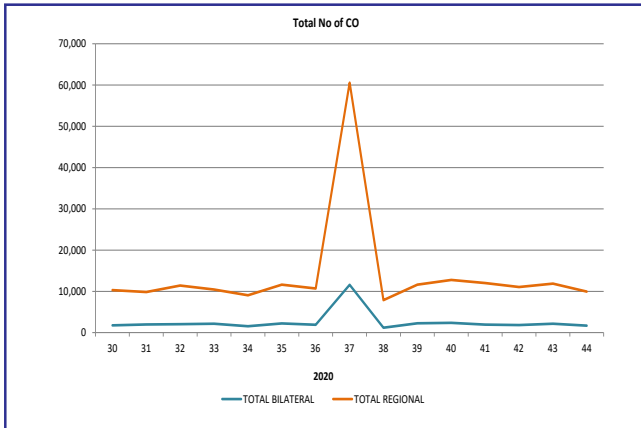
TOP FIVE MALAYSIA EXPORT DESTINATIONS



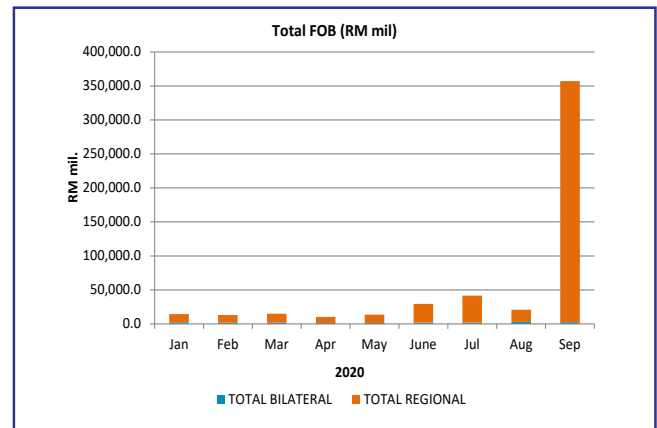
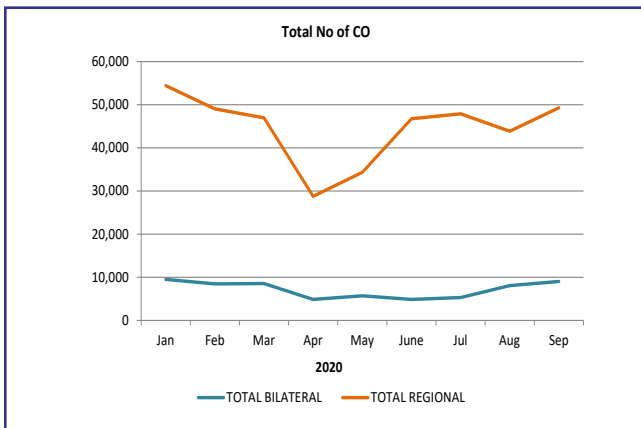
Sources: <https://www.trademap.org/index.aspx>

Number and FOB Value of PCO as at 01 November 2020 Weekly / Monthly/ Annually

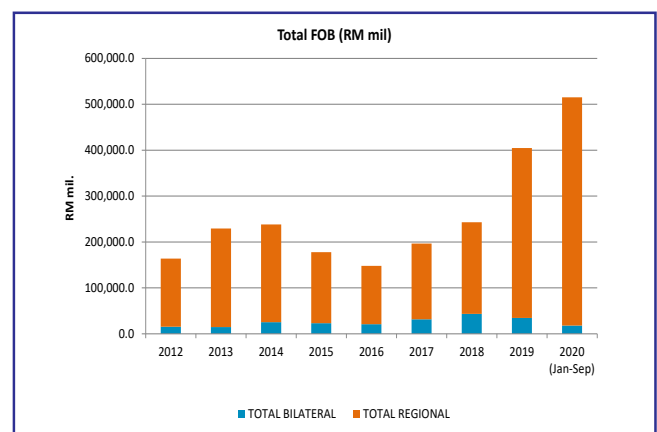
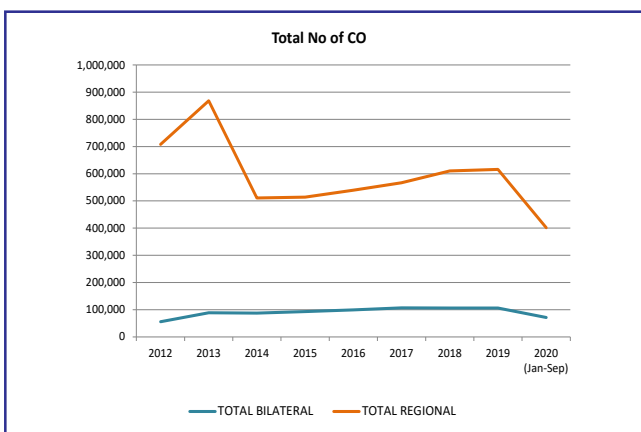
Weekly



Monthly

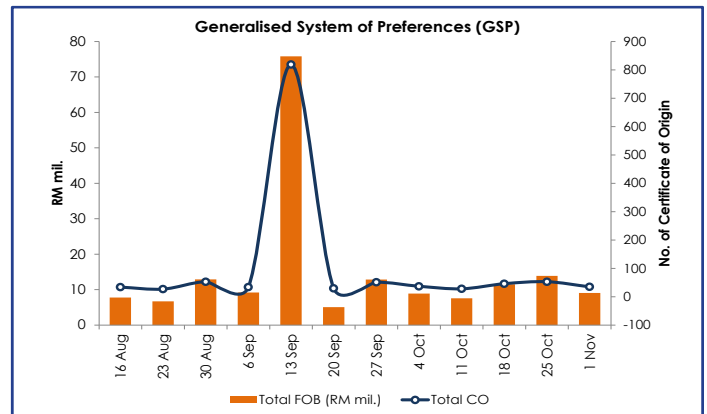
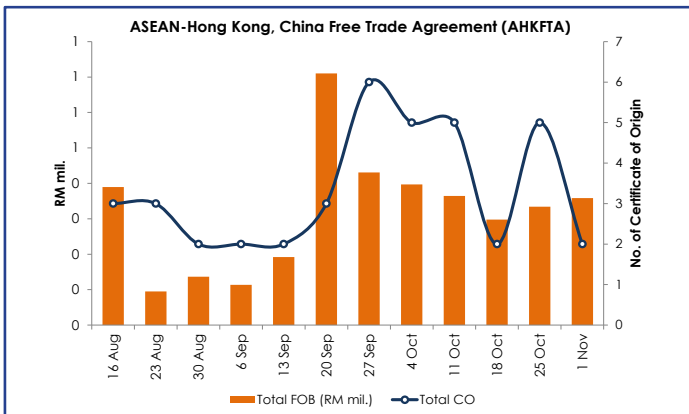
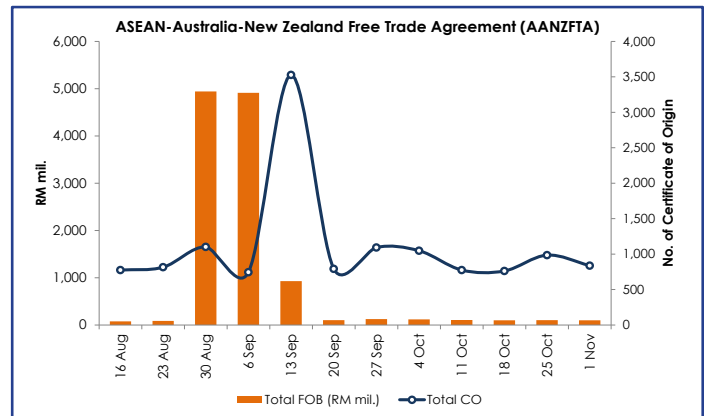
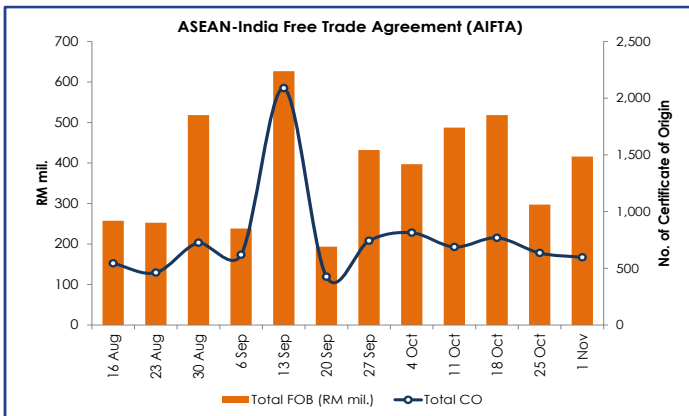
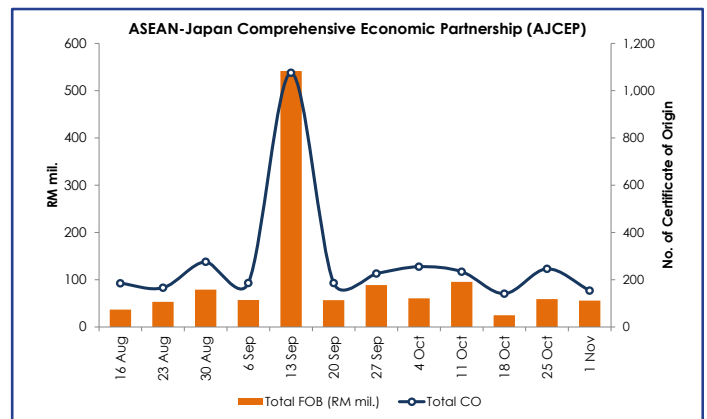
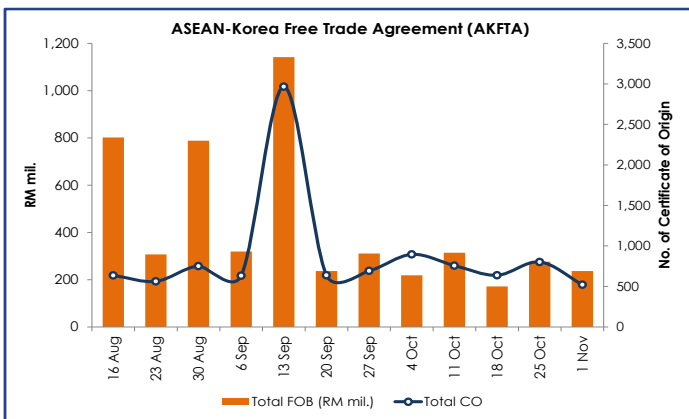
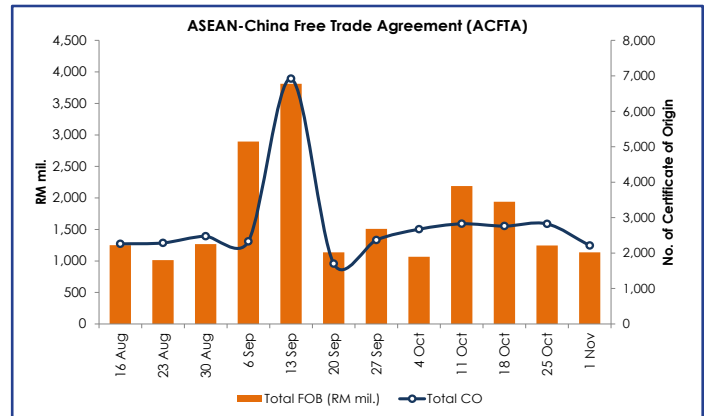
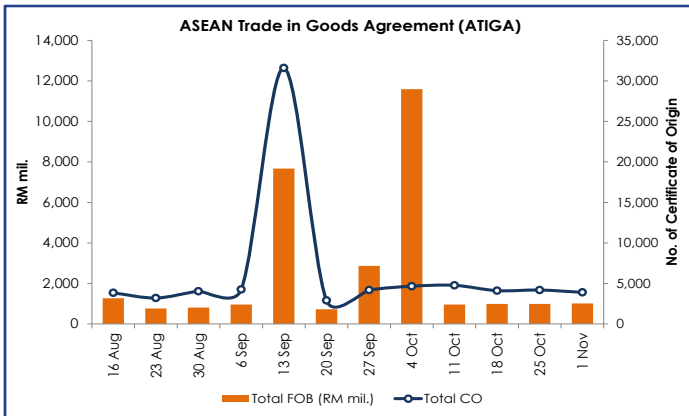


Annually



Note: *Provisional Data
Source: Ministry of International Trade and Industry, Malaysia

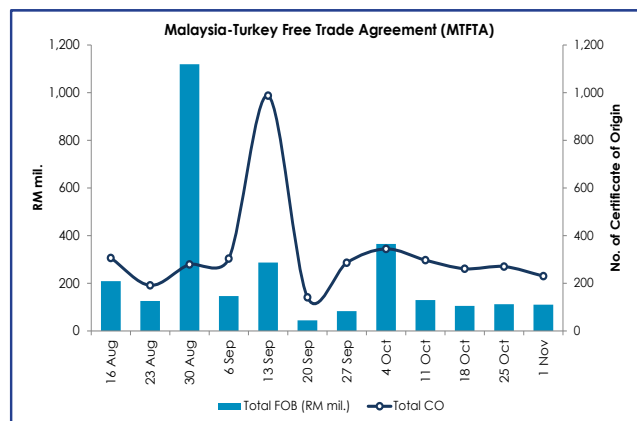
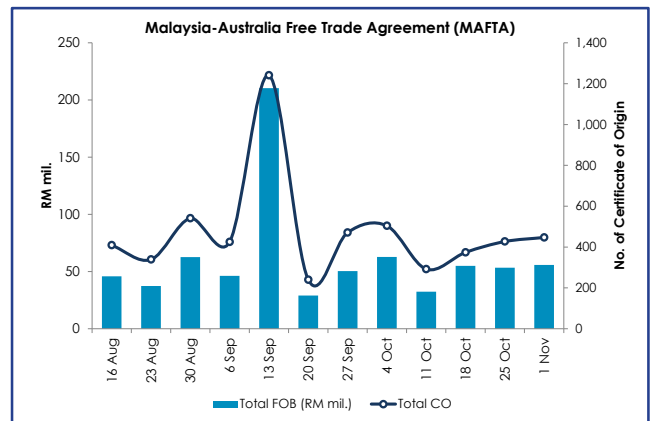
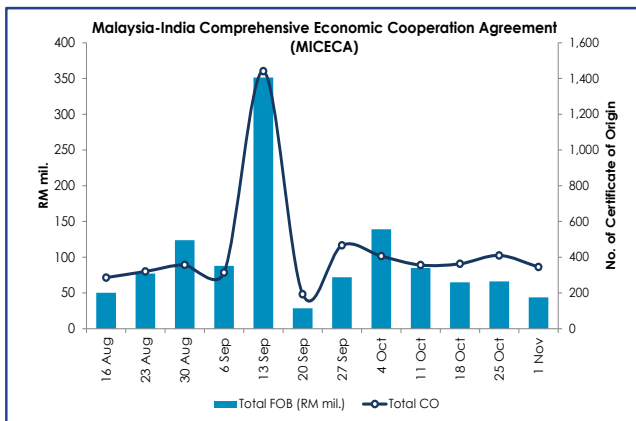
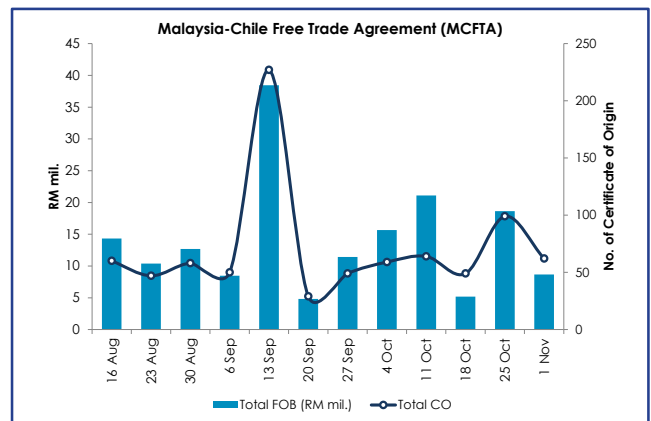
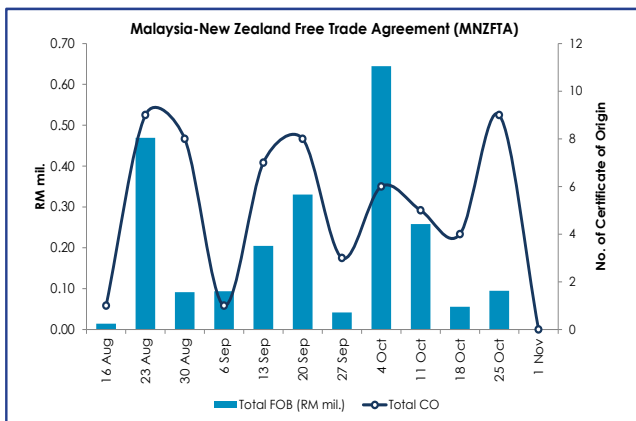
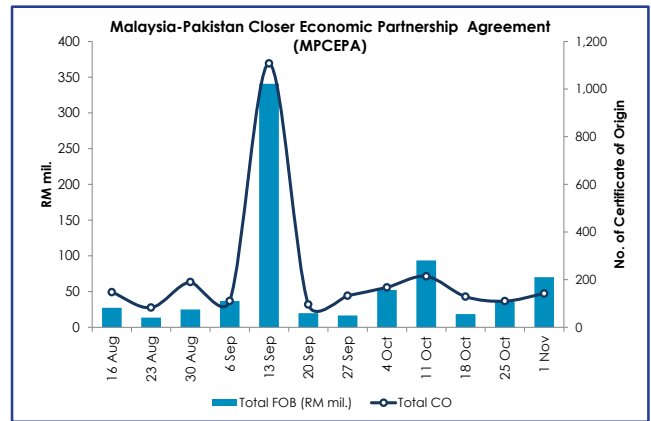
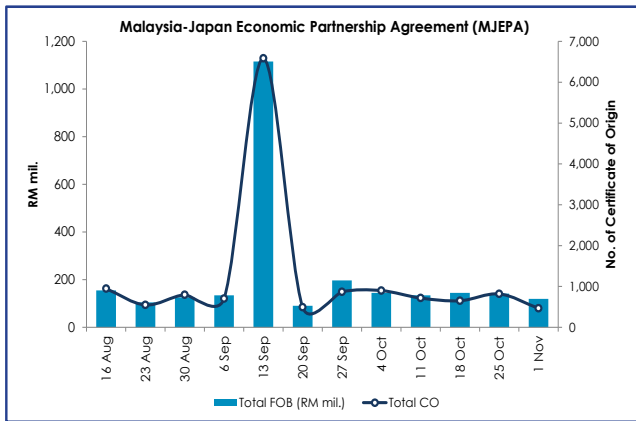
Regional FTA Number and Value of Preferential Certificates of Origin (PCOs)



Note: The preference giving countries under the GSP scheme are Liechtenstein, the Russian Federation, Japan, Switzerland, Belarus, Kazakhstan and Norway.

Note: *Provisional Data
Source: Ministry of International Trade and Industry, Malaysia

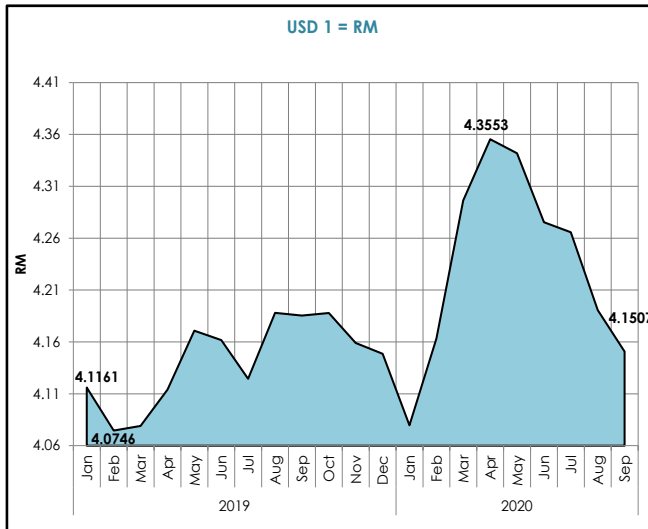
Bilateral FTA Number and Value of Preferential Certificates of Origin (PCOs)



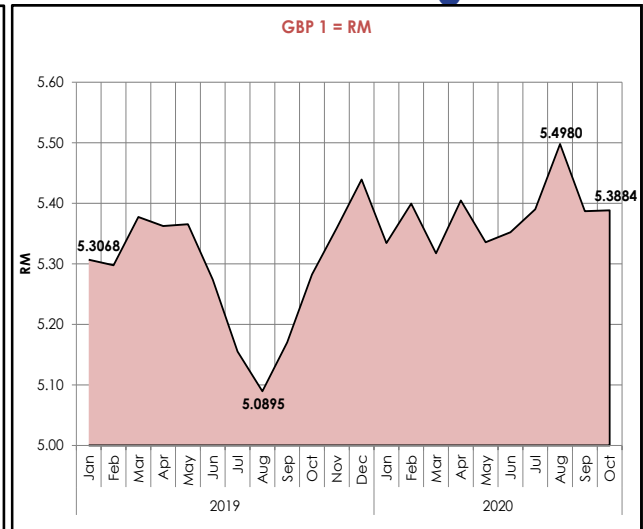
Note: *Provisional Data
Source: Ministry of International Trade and Industry, Malaysia

Malaysian Ringgit Exchange Rate with Selected Countries, January 2019 - October 2020

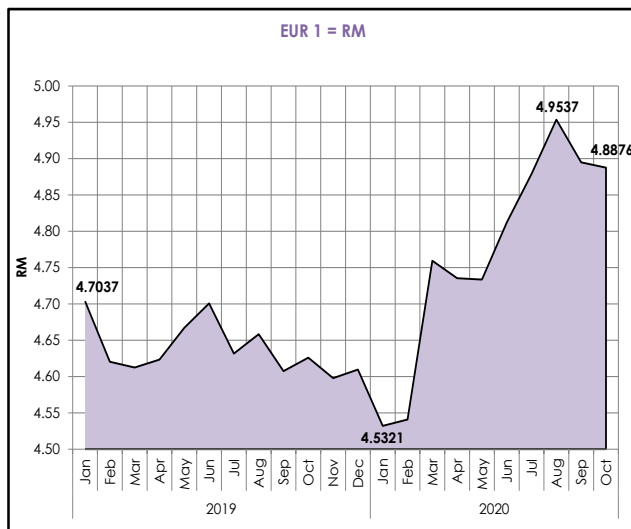
US Dollar



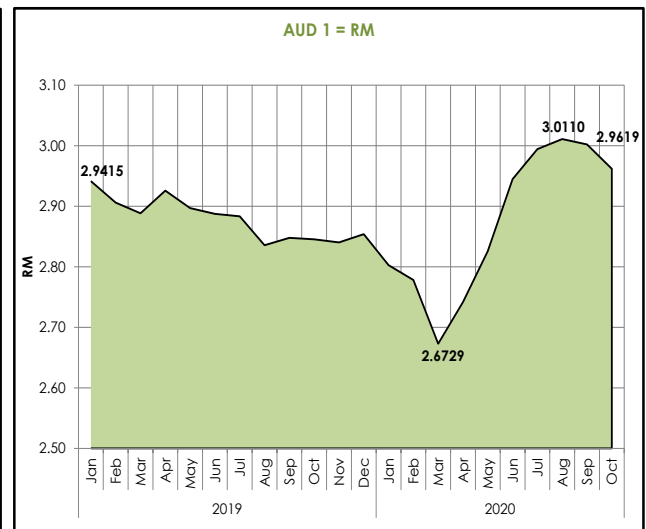
Pound Sterling



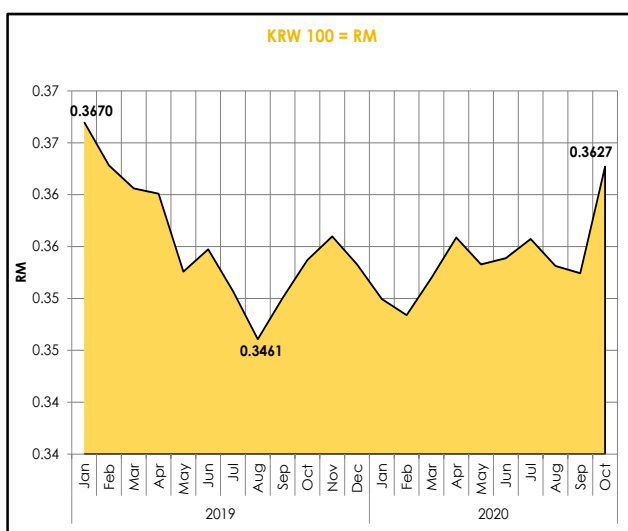
Euro



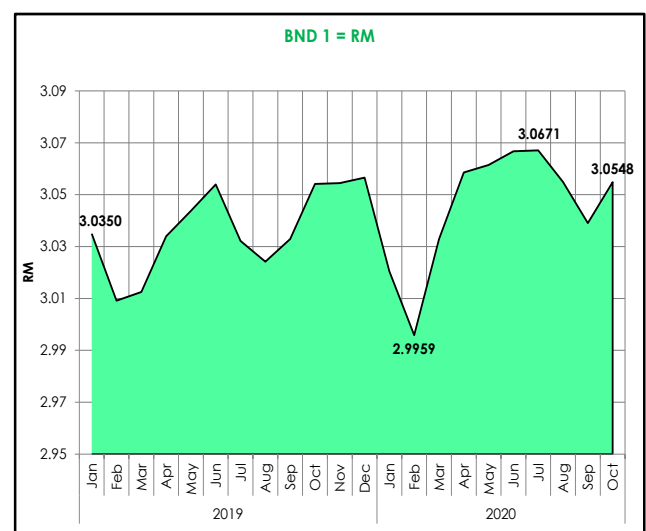
Australian Dollar



South Korean Won

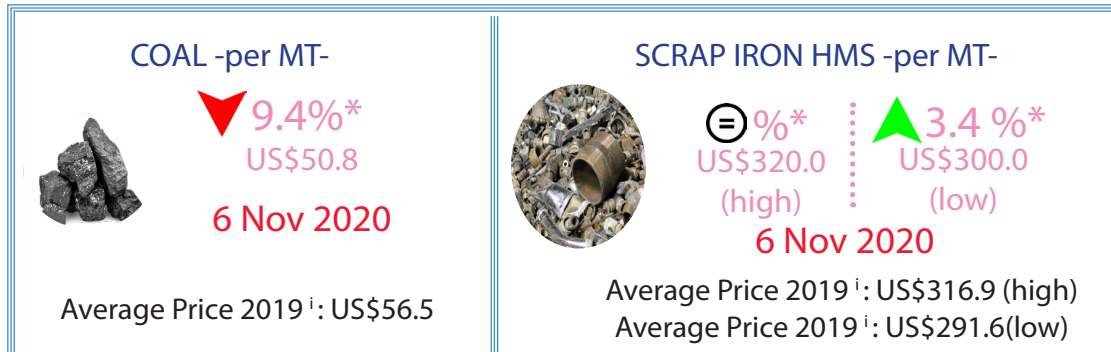
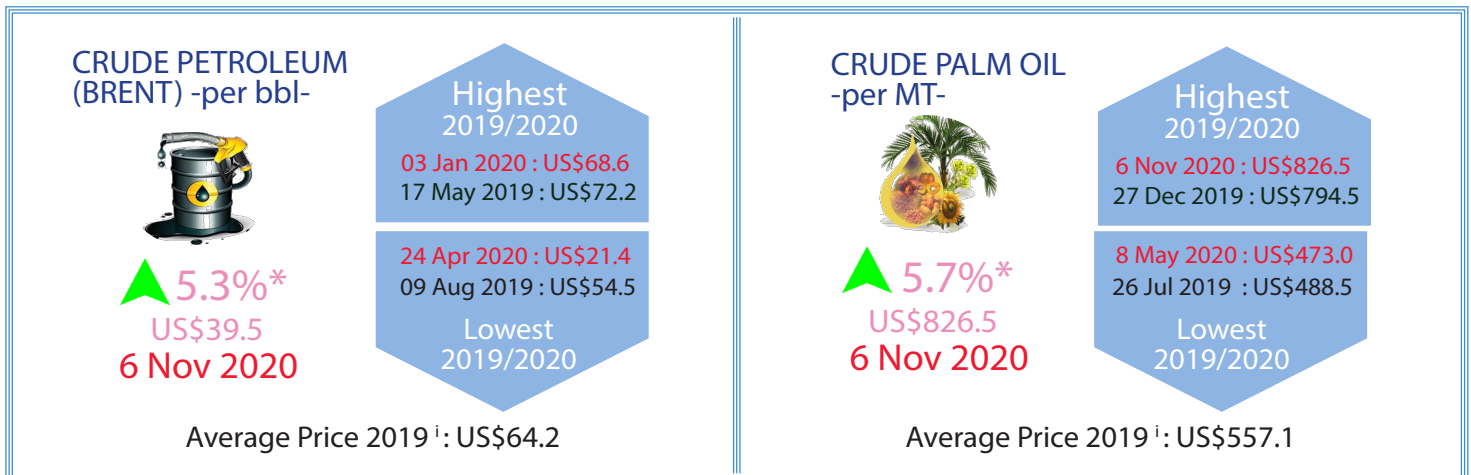


Brunei Dollar



Source : Bank Negara Malaysia

Commodity Prices



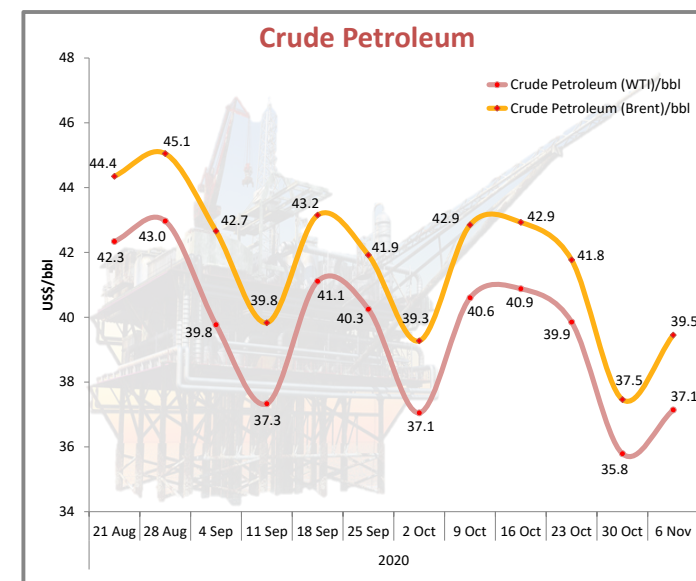
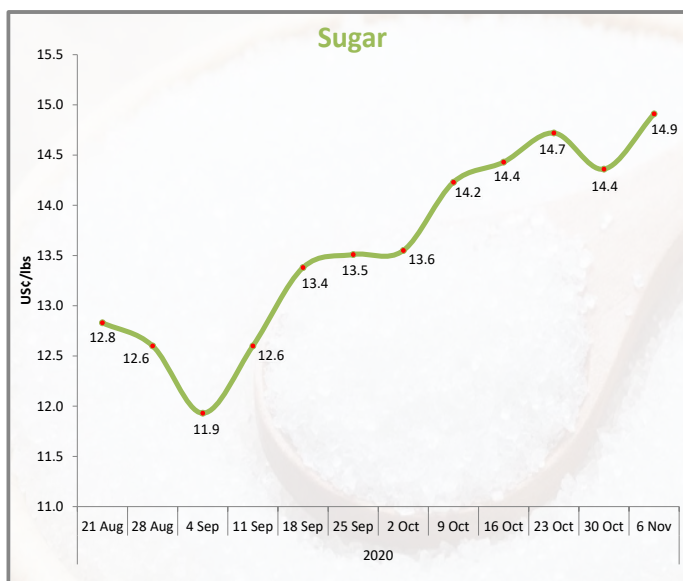
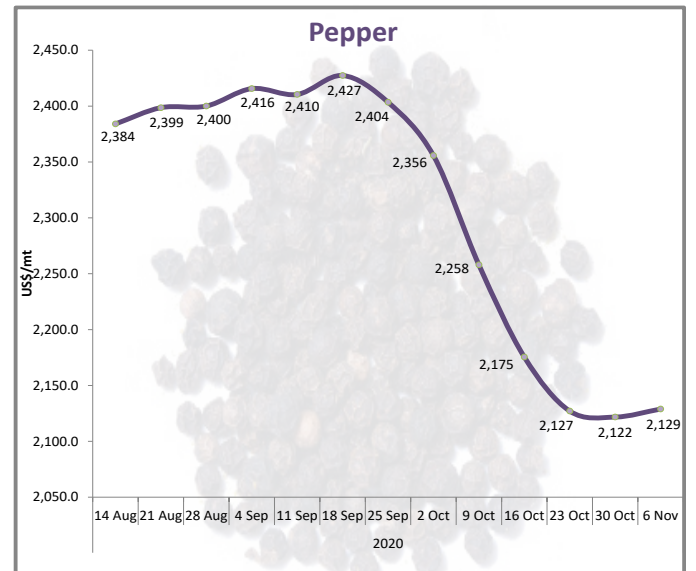
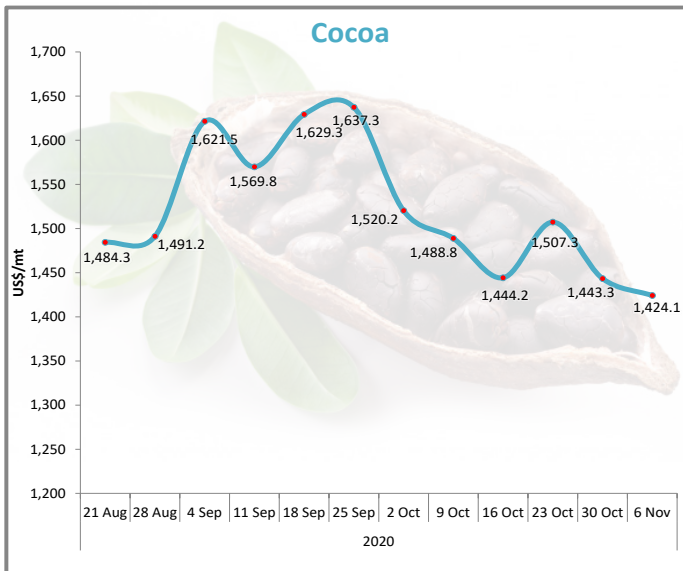
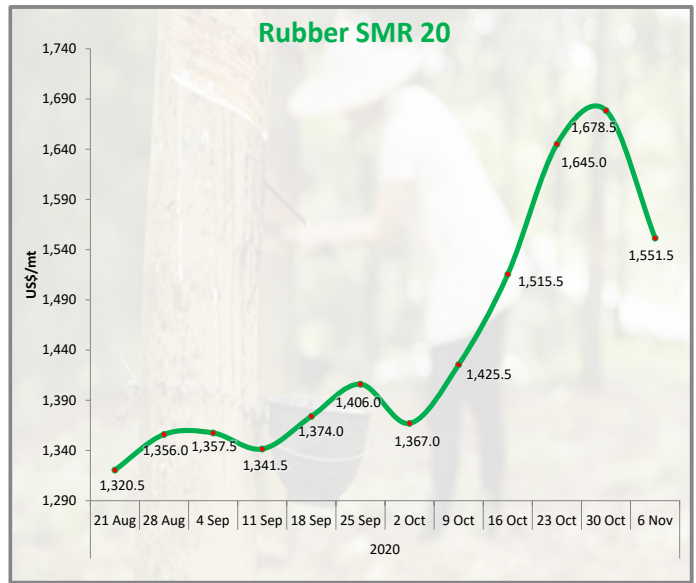
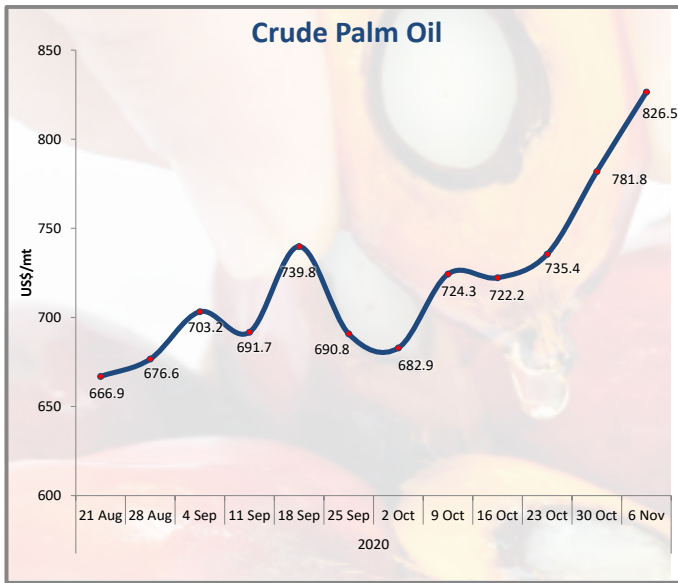
Notes: All figures have been rounded to the nearest decimal point

* Refer to % change from the previous week's price

i Average price in the year except otherwise indicated

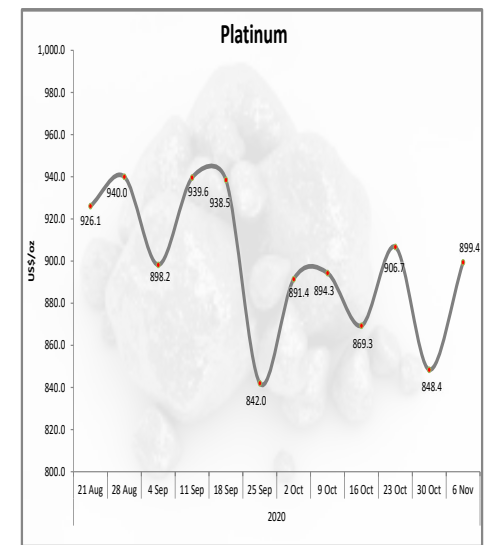
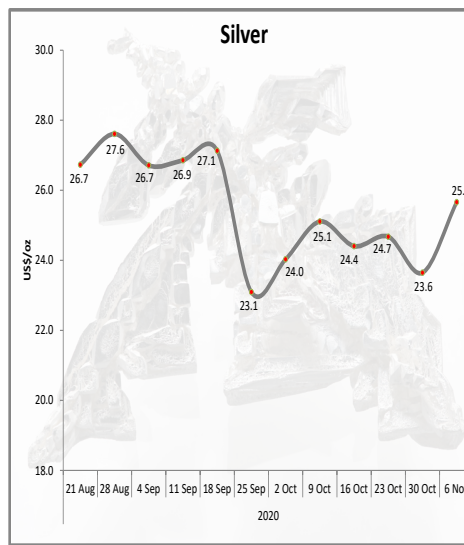
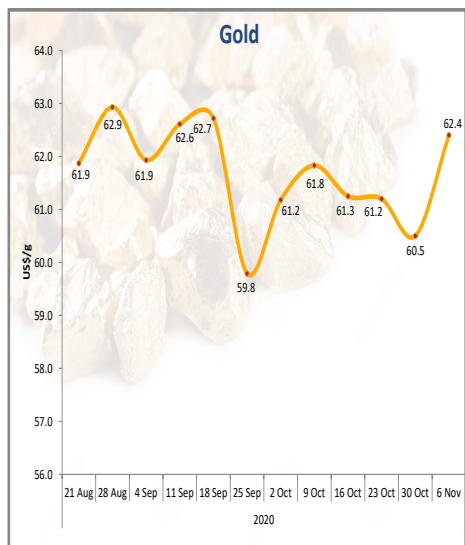
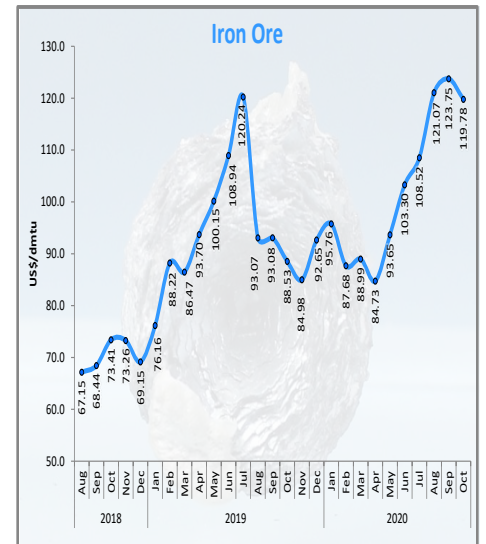
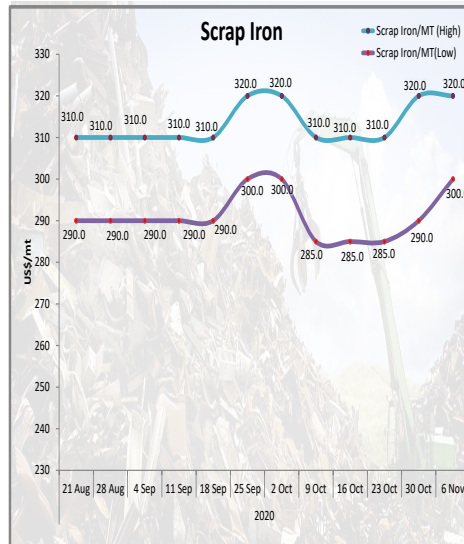
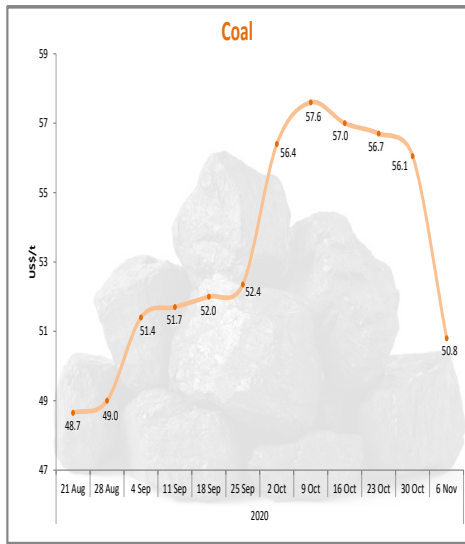
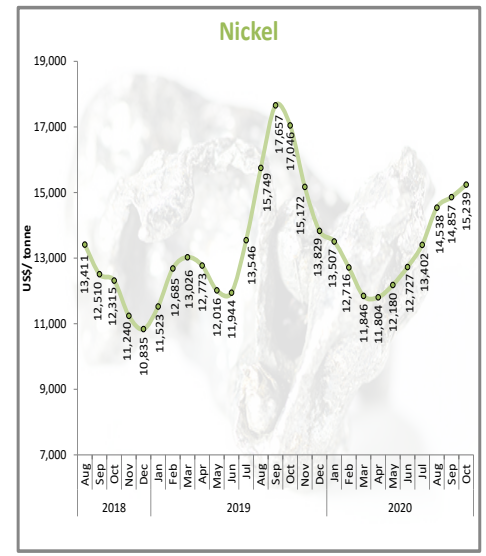
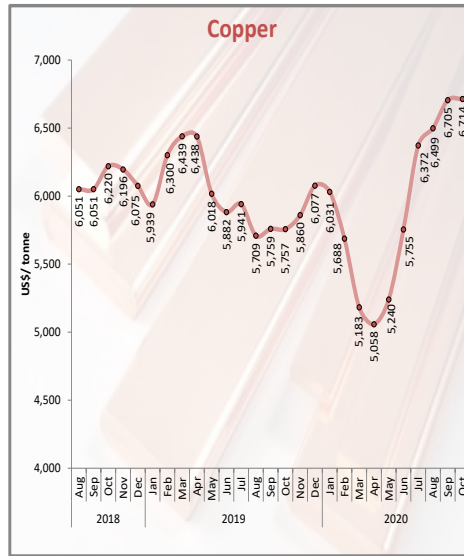
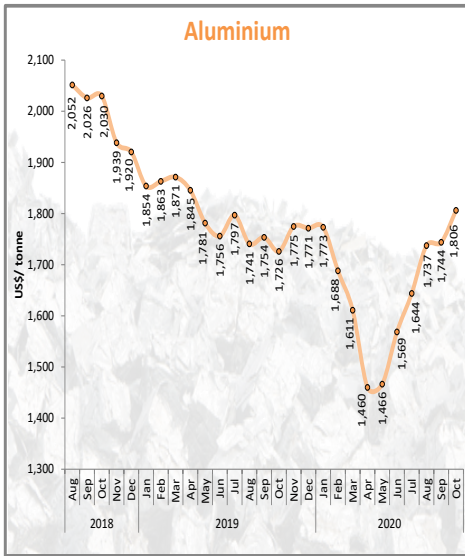
Sources: Ministry of International Trade and Industry Malaysia, Malaysian Palm Oil Board, Malaysian Rubber Board, Malaysian Cocoa Board, Malaysian Iron and Steel Industry Federation, and Bloomberg.

Commodity Price Trends



Sources: Ministry of International Trade and Industry Malaysia, Malaysian Palm Oil Board, Malaysian Rubber Board, Malaysian Cocoa Board, Malaysian Pepper Board, Bloomberg and Czarnikow Group, World Bank, World Gold Council, The Wall Street Journal.

Commodity Price Trends



Sources: Ministry of International Trade and Industry Malaysia, Malaysian Iron and Steel Industry Federation, Bloomberg and Czarnikow Group, World Bank, World Gold Council, The Wall Street Journal.



INDUSTRY4WRD RELATED INCENTIVES

Having the extra capital allows SMEs to flourish and prosper. Find the suitable fund for your company.

01 | LOANS

Soft Loan Scheme for Automation and Modernisation (SLSAM)

- targets manufacturing sectors
- 4.0% interest rate per annum for SMEs
- www.midf.com.my

Industry Digitalisation Transformation Fund (IDTF)

- targeted sectors: AI, Robotics, Automation etc.
- provides a 2% interest rate subsidy
- www.bpmb.com.my

Coming Soon!

1. Intervention Fund*
 - 70:30 matching grant up to RM500,000.
2. Industry4WRD DISF*
 - 60:40 matching grant

*participation in Industry4WRD RA is a prerequisite to apply

Domestic Investment Strategic Fund (DISF)

- 50:50 matching grant to companies adopting Industry 4.0 enabling technologies
- targets manufacturing and services sectors
- www.mida.gov.my

02 | GRANTS

Digital Transformation Acceleration Program (DTAP) Pilot Grant

- 1:1 matching grant
- targets large corporate and mid-tier companies in Malaysia
- assists companies to tap on the expertise of Digital Transformation Labs (DTL)
- www.mdec.my

Automation Capital Allowance (Automation CA)



For Labour Intensive Industries:

- Automation CA of 200% on the first RM4 million expenditure incurred within 5 years

For other industries:

- Automation CA of 200% on the first RM2 million expenditure incurred within 5 years
- www.mida.gov.my

For more information, kindly click the following links:

https://www.miti.gov.my/index.php/pages/view/industry4WRD?mid=559#tab_547_2202



MINISTRY OF INTERNATIONAL TRADE AND INDUSTRY

INDUSTRY4WRD READINESS ASSESSMENT

Get your firm assessed. Be ready for Industry 4.0.

ALL YOU NEED TO KNOW.....

Industry4WRD

All you need to know about Industry4WRD RA



What is it?

Trained assessors will help you to understand your readiness for Industry 4.0 and make recommendations on where to start your transformation.

Who is eligible?



- ✓ Manufacturing and its related services sector
- ✓ Incorporated under the Companies Act (1965/2016)/ Registration of Business Act (1956)
- ✓ Hold a valid license
- ✓ In operation for more than 3 years

What are the benefits?



- ★ To identify areas of improvement in terms of people, process and technology.
- ★ Receive comprehensive readiness report.
- ★ Be entitled to apply for financial incentives.

Process Flow

A FEW SIMPLE STEPS

Incentives for RA

- 500 SMEs will be selected for free assessment.
- Others will get tax exemption on RA fees up to RM27k.



Enquiries

- General: i4.0@miti.gov.my
- RA: industry4wrd@mpc.gov.my



For more information, kindly click the following links:
<https://www.miti.gov.my/index.php/pages/view/industry4WRD>



Get connected with businesses from all around the APEC region through #MyAPEC2020 virtual exhibition

1 September - 31 December 2020
www.myapec2020.matrade.gov.my



We are doing things differently in today's world. MITI, through our agency, MATRADE HQ, is organising a virtual exhibition, the first-of-its-kind in Malaysia, called #MyAPEC2020 Exhibition, in conjunction with Malaysia hosting the @APEC 2020. The virtual exhibition, scheduled for Sept 1 to Dec 31, will showcase products and services from Malaysia and other APEC - Asia-Pacific Economic Cooperation member economies. The virtual exhibition is a great platform for APEC economies to expand their outreach and can be accessed through myapec2020.matrade.gov.my or the APEC portal and Matrade website.

ANNOUNCEMENT

WORK FROM HOME (WFH) INSTRUCTIONS ARE STILL APPLICABLE THROUGHOUT THE EXTENDED CMCO PERIOD

The WFH instructions announced earlier is still applicable to all office management and supervisory roles. Should this group of workers are required to be present at the office, only 10% of them are allowed to do so starting from 10.00am - 2.00pm for 3 days a week.

#STAYCALM #BARISANHADAPANEKONOMI

21 Oktober 2020

Dasar Bekerja Dari Rumah (BDR) @ Work From Home (WFH)

Wajib bagi kakitangan pengurusan dan penyeliaan di kawasan yang sedang menjalani PKPB

bermula 22 Oktober 2020

21 Oktober 2020

Pekerja daripada **kumpulan pengurusan dan penyeliaan** yang boleh hadir ke pejabat jika perlu:

KAPASITI 10 PERATUS SAHAJA DARIPADA SKOP TUGAS DI BAWAH

- Perakaunan
- Perundangan
- Kewangan
- Perancangan
- Pentadbiran
- ICT

Had berada di pejabat 4 jam sahaja
10.00 pagi - 2.00 petang
(3 hari bekerja dalam seminggu)

21 Oktober 2020

Contoh situasi amalan Bekerja Dari Rumah (BDR)

Syarikat A terlibat dalam industri pembuatan. Syarikat ini mempunyai:

- ▶ 1000 pekerja operasi
- ▶ 100 pekerja kumpulan pengurusan dan penyeliaan pejabat.

Siapa perlu BDR?

1000 pekerja operasi boleh bekerja seperti biasa dan tidak perlu BDR

10 peratus atau 10 orang daripada kumpulan pengurusan dan penyeliaan pejabat boleh datang bekerja.

21 Oktober 2020

Aplikasi yang boleh membantu anda kekal produktif walau bekerja dari rumah.

KEMENTERIAN PERAGAMAAN, ANTARAGABANGSA DAN INDUSTRI

Aplikasi persidangan video seperti Zoom, Google Meets dan Microsoft Teams.

KEMENTERIAN PERAGAMAAN, ANTARAGABANGSA DAN INDUSTRI

KEMENTERIAN
PERDAGANGAN ANTARABANGSA DAN INDUSTRI

**Simpan dokumen dan fail
di laman web seperti
Dropbox, Google Drive
dan Microsoft Teams.**



KEMENTERIAN
PERDAGANGAN ANTARABANGSA DAN INDUSTRI

**Kukuhkan pengetahuan
anda tentang teknologi
digital di MDEC Digital
Accelerator Portal.**

dx.com.my



MINISTRY OF
INTERNATIONAL TRADE AND INDUSTRY

**8 business operation
areas that SMEs could
apply digital solutions**



MINISTRY OF
INTERNATIONAL TRADE AND INDUSTRY

-  **Electronic Point of Sale System**
-  **Human Resource Management**
-  **Customer Relationship Management System**
-  **Procurement System**



MINISTRY OF
INTERNATIONAL TRADE AND INDUSTRY

-  **Enterprise Resource Planning/Tax Accounting**
-  **Digital Marketing/Sales**
-  **e-Commerce**
-  **Remote Working**



MINISTRY OF
INTERNATIONAL TRADE AND INDUSTRY

**For more info on digital
solutions, visit MDEC
Accelerator Portal**

dx.com.my/en/solutions/





MITIMalaysia



MITI Call Center

03-6208 4949



MITIMalaysiayoutube



www.miti.gov.my

Bagi sebarang pertanyaan berkaitan MITI seperti operasi sektor ekonomi atau amalan BDR/WFH sila hubungi talian hotline MITI seperti di atas.

MITI POCKET TALK

A SERIES OF SESSION FOR THE PRIVATE SECTOR

 **When?** Once a month

 **Where?** MITI Tower Kuala Lumpur or MITI Regional Offices

Information on the benefits of **Free Trade Agreements (FTAs)** and current updates

Introduction on **Preferential Certificates of Origin (PCO)** application procedures

For more information, please contact :



03-6200 0468 / 69 / 57



allaki@miti.gov.my

OPTIMISING HUMAN POTENTIAL TOWARDS FUTURE OF SHARED PROSPERITY

#MyAPEC2020



Asia-Pacific
Economic Cooperation



APEC 2020
MALAYSIA

For more information, kindly click the following links:

<https://www.myapec2020.my/en/>



Be part of MITI database throughout RMCO
by registering your company in
notification.miti.gov.my

For submission, kindly click <https://notification.miti.gov.my/login>

IMPLEMENTATION OF ELECTRONIC SIGNATURE AND SEAL THROUGH THE EPCO SYSTEM

EFFECTIVE FROM 13 APRIL 2020

For more information, kindly click the following links:
<https://bit.ly/2RUyG8l>

HOW COMPANY CAN CHECK THE STATUS OF ATIGA E-FORM D TRANSACTIONS IN THE ELECTRONIC PREFERENTIAL CERTIFICATE OF ORIGIN (EPCO) SYSTEM

For more information, kindly click the following links: <https://bit.ly/2ZhxmRp>

*Be part of the MITI community.
Let's Build Back Better together.*
#BersamaMenjanaEkonomi

1

Klik pautan:
Click the link:
<https://ecensus.mycensus.gov.my>

2

Klik butang **Pendaftaran** untuk mendaftar e-Census dan kemaskini maklumat berikut:
Click **Register** button to register for e-Census and update the following information:
a. Nama Penuh / Full Name
b. E-mel / E-mail
c. No. Telefon Bimbit / Handphone No.

3

Klik **YA** pada **Adakah anda mempunyai Invitation Code?** dan kemaskini maklumat berikut:
Click **YES** for **Do you have an Invitation Code?** and update the following information:
a. Masukkan / Enter Invitation Code
b. Klik Daftar / Click Register

BAGAIMANA UNTUK LOG MASUK e-CENSUS?
HOW TO LOGIN TO e-CENSUS?

4

Daftar menggunakan **One-Time Password (OTP)** yang diterima.
Register using the **One-Time Password (OTP)** received.

7

Jawab **SEMUA** soalan.
Klik butang **SETERUSNYA** dan **SAHKAN**.
Answer **ALL** questions.
Click **NEXT** and **CONFIRM** button.

6

Sila masukkan No. Pengenalan Diri yang sah dan klik butang **SETERUSNYA**.
Insert your valid Personal ID No. and click **NEXT** button.

5

Sila masukkan **nombor telefon** yang didaftarkan dan klik **Log Masuk**. Masukkan **OTP** yang diterima.
Insert **phone number** used for registration and click **Log In**. Enter the **OTP** received.

Sebarang pertanyaan atau maklum balas, sila hubungi pegawai berikut:
Any question(s) or feedback, please contact the following officer:

Pembanci / Enumerator:

No. Telefon Pembanci / Enumerator Contact No.:

DATA ANDA MASA DEPAN KITA
YOUR DATA IS OUR FUTURE



www.mycensus.gov.my



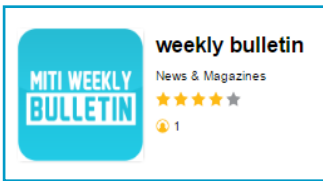
Hotline MyCensus 2020
1-800-88-7720

Sila abaikan notis ini sekiranya anda telah menjawab Soal Selidik Banci 2020 secara atas talian.
Kindly disregard this notice if you have answered the MyCensus 2020 questionnaire online.



**HAPPY DEEPAVALI
FROM ALL OF US AT MITI & AGENCIES**

MITI Weekly Bulletin (MWB) Mobile Apps



MITI MWB APPs is now available for IOS, Android and Windows platforms.

MWB APPs can be downloaded from **Gallery of Malaysian Government Mobile APPs (GAMMA)** at the link: <http://gamma.malaysia.gov.my/#/appDetails/85>

Feedback

Send us your suggestions

Dear Readers,

Kindly click the link below for any comments in this issue. MWB reserves the right to edit and republish letters as reprints.

<http://www.miti.gov.my/index.php/forms/form/13>