



MINISTRY OF INTERNATIONAL TRADE AND INDUSTRY

Weekly BULLETIN

VOLUME 616

15 December 2020 | NO. ISSN :2180-0448

Leadership And Digital Summit 2020: Go B.I.G With Digital Featured Notable Leaders For Digital Transformation

Digital Productivity Nexus, which is commissioned under Malaysia Productivity Blueprint (MPB) had its inaugural Leadership and Digital Summit 2020: Go B.I.G with Digital on 8 December 2020 at Kuala Lumpur, officiated by Senior Minister of International Trade and Industry Malaysia, YB Dato' Seri Mohamed Azmin Ali.

Champion of Digital Productivity Nexus, Dato Wei Chuan Beng opened the discussion by emphasizing on the importance of quickening the digitalisation's adoption rate. He said, We have entered the next era of technology: the digital age. With the rapid pace of the evolving technology, it continues to revolutionise how we live and how businesses operate. In response to the Covid-19 pandemic, digital technologies have proven to be practical solutions. Digital Malaysia will be ready for challenges and opportunities in the future.

He added, Go B.I.G with Digital is aimed to call upon all leaders to embrace a mindset change towards finding new breakthrough performance with digital adoption. Leaders have to take charge, take risk, take pride in the digital direction of the respective organization.

The summit also expands on the relevance of the transparency and integrity using digital technology to achieve the desired outcome of customer loyalty. Leaders recognized that digital is a force of good for all stakeholders. The Go B.I.G with Digital Video was also featured for the first time at the summit, reflecting the impact and exponential possibilities when leaders helm the digital adoption journey.

Honorable Guests YBhg. Tan Sri Mohd Zuki Ali, the Chief Secretary to the Government, and YBhg. Tan Sri Jamaludin Ibrahim, the President of Axiata Group Berhad also presented their keynote speeches entailing breakthrough via technology adoption has greatly impacted the productivity of their people, divisions, industries and agencies.

Other speakers include Dato' Michael Tio, CEO and MD of PKT Logistics Group, Dr Dzaharudin Mansor, National Technology Officer of Microsoft Malaysia. Datuk Wira Dr. Rais Hussin Mohamed Ariff and M. Nazri Muhd, CEO of MyFinB Group. Moderators of the summit were PIKOM Chairman Danny Lee and PIKOM Advisor Shaifubahrim Saleh.

The Summit also sees the ceremony of Exchange Certificate of Collaboration between Department of by Polytechnic and Community College Education (DPCCE) and Malaysia Productivity Corporation (MPC).

The Leadership Summit was attended online by over 300 delegates across all industry sectors including heads of government agencies. The closing of the summit also featured technology providers in Augmented Reality (AR) and Artificial Intelligence showcase.

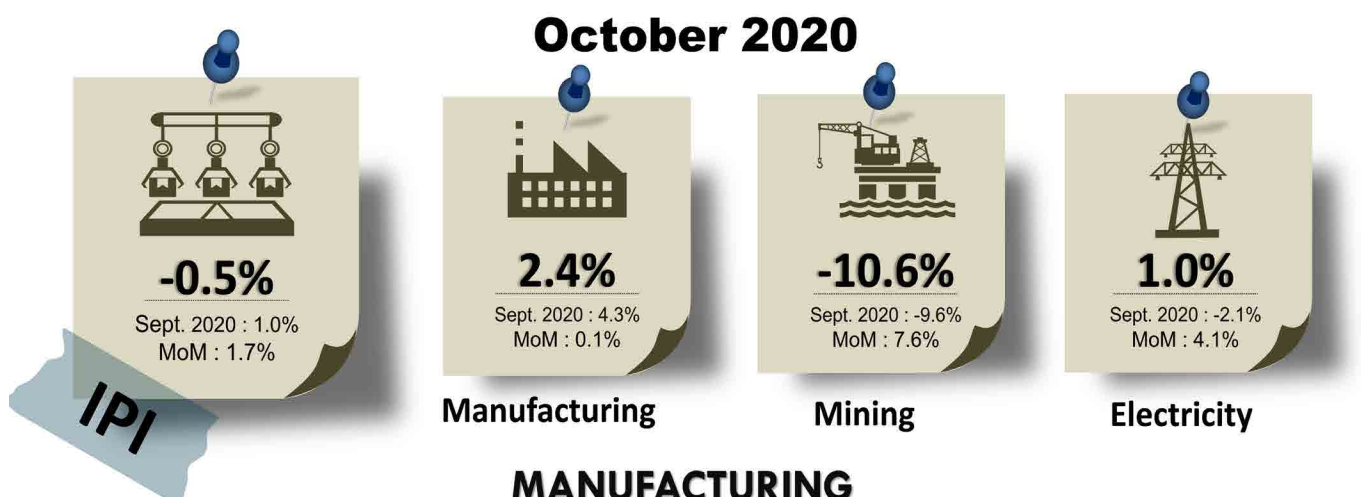
Source :

<http://malaysiasme.com.my>

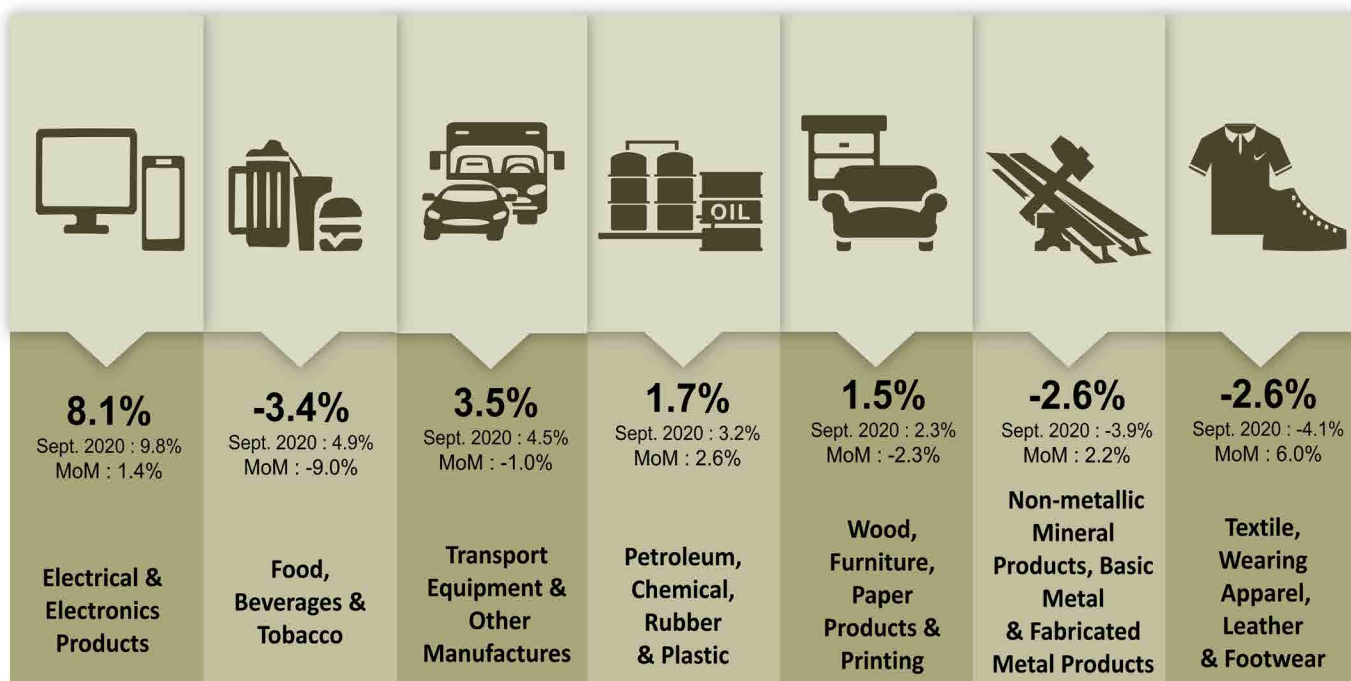
13 December 2020

INDUSTRIAL PRODUCTION INDEX, OCTOBER 2020

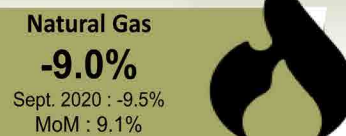
The Industrial Production Index (IPI) contracted 0.5 per cent in October 2020 as compared to the same month of the previous year. The deterioration of IPI in October 2020 was due to the significant decrease of 10.6 per cent in Mining index. Meanwhile the Manufacturing and Electricity index recorded a growth of 2.4 per cent and 1.0 per cent respectively.



MANUFACTURING



MINING

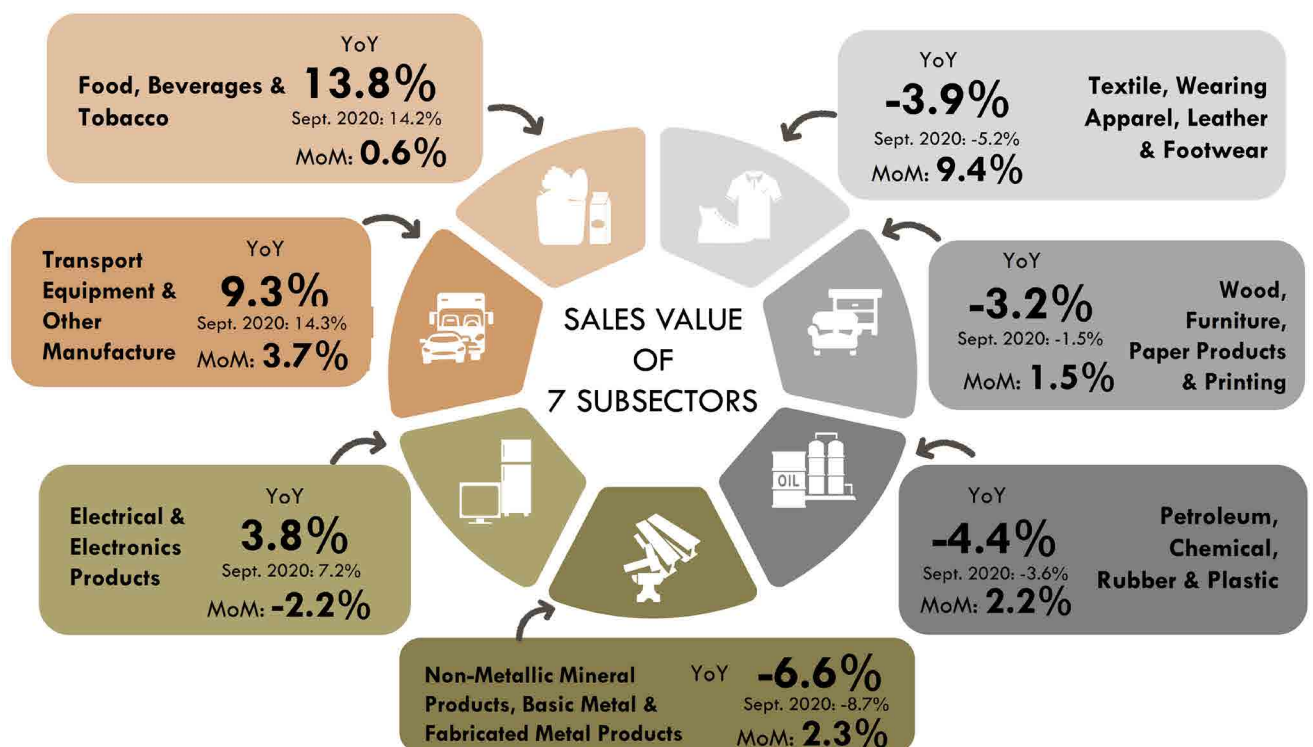
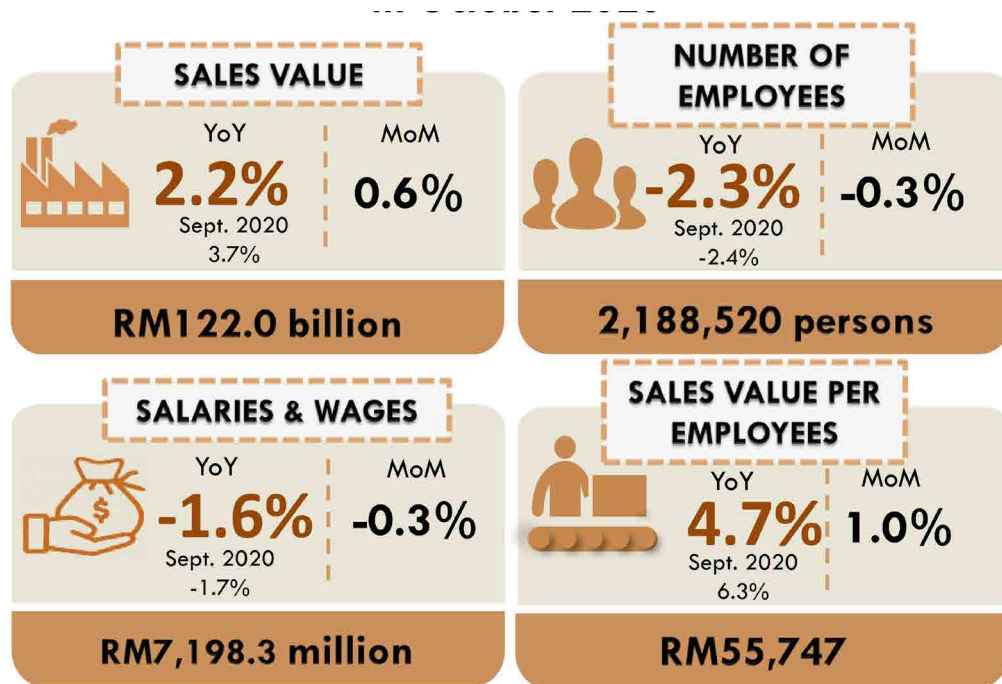


Note: Percentage refers to the change in Month-on-Month (MoM) and Year-on-Year (YoY)

Source: Index of Industrial Production, Malaysia October 2020

MONTHLY MANUFACTURING , OCTOBER 2020

Malaysia's Manufacturing sales in October 2020 stood at RM122.0 billion, grew 2.2 per cent as compared to RM119.4 billion reported a year ago. On month-on-month growth, the sales value went up by 0.6 per cent (RM0.8 billion) while in a seasonally adjusted terms, the sales value declined by 1.6 per cent.

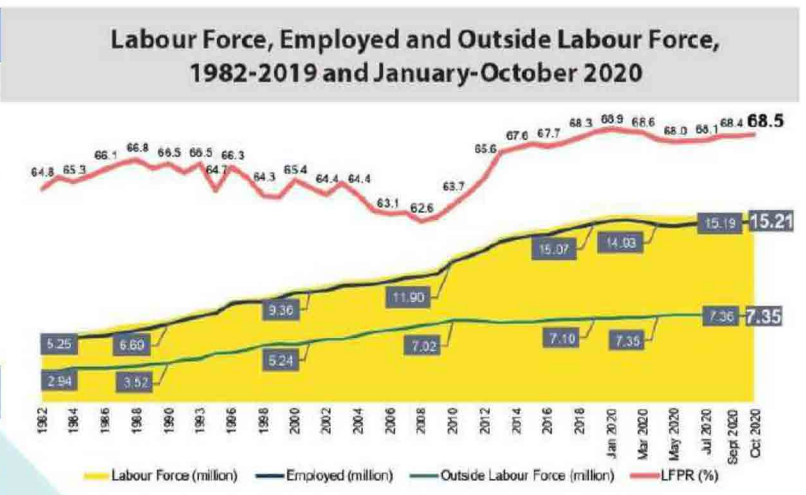
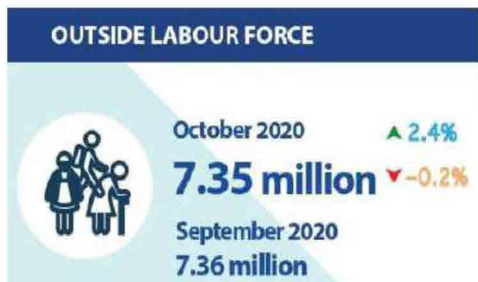


Note : Percentage growth refers to Year-on-Year (YoY) and Month-on-Month (MoM) changes

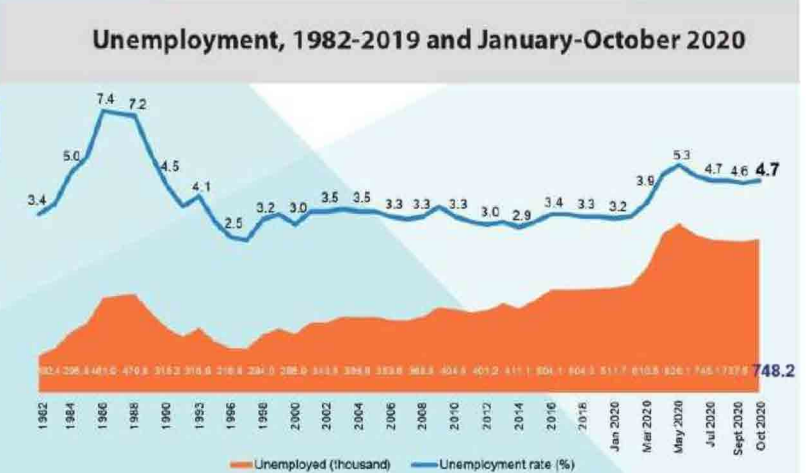
Source : Monthly Manufacturing Statistics, Malaysia October 2020
Department of Statistics Malaysia

LABOUR FORCE, OCTOBER 2020

In October 2020, employed persons registered an uptrend for five consecutive months with a marginal growth of 0.1 per cent month-on-month or equivalent to 14 thousand persons to record 15.21 million persons. The employment-to-population ratio rose 0.1 percentage point to 65.3 per cent in October 2020.



Employed persons was **15.21 million** persons, increased by 14.0 thousand persons as compared to the previous month



The number of unemployed persons increased to **748.2 thousand** persons

% Percentage of change (year on year)
% Percentage of change (month on month)
pp Percentage points

Source: Labour Force Survey, Department of Statistics Malaysia

WHOLESALE & RETAIL, OCTOBER 2020

Sales value of Wholesale & Retail Trade recorded RM110.5 billion in October 2020 to register -0.8 per cent year-on-year (Chart 1). This was due to Retail Trade which contracted 1.5 per cent (-RM0.7 billion). Similarly, Wholesale Trade also recorded a decrease of 0.9 per cent (-RM0.5 billion). On the other hand, Motor Vehicles continued a positive growth of 2.2 per cent or an increase of RM0.3 billion.



Sales of Wholesale & Retail Trade Malaysia Register -0.8 per cent Growth



Performance by Sub-sector



VOLUME INDEX OF WHOLESALE & RETAIL TRADE, OCTOBER 2020

Volume Index Records -1.4 per cent Growth



2 Seasonally Adjusted Volume Index (Monthly)



3 Performance by Sub-sector

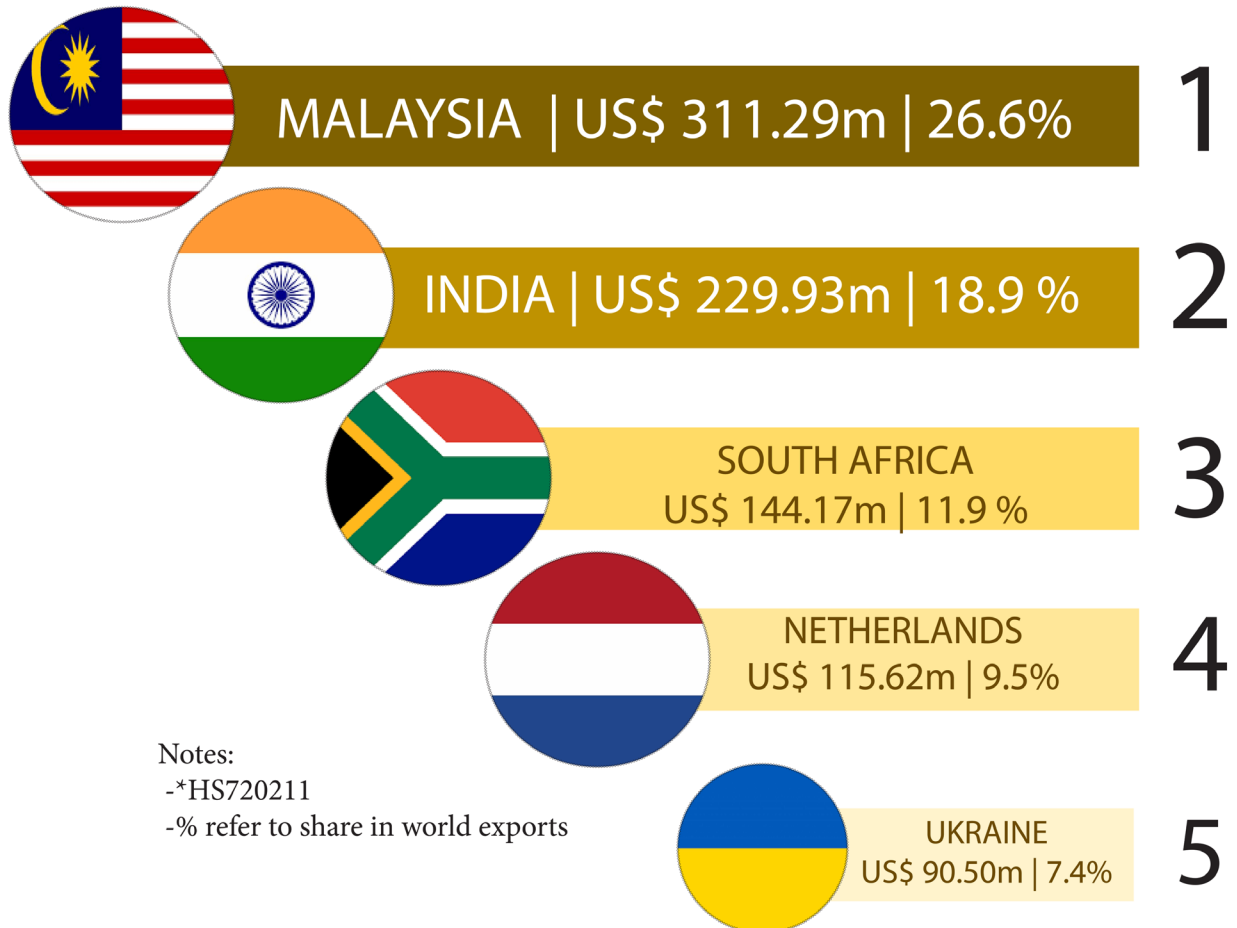


Percentage change: Year-on-Year

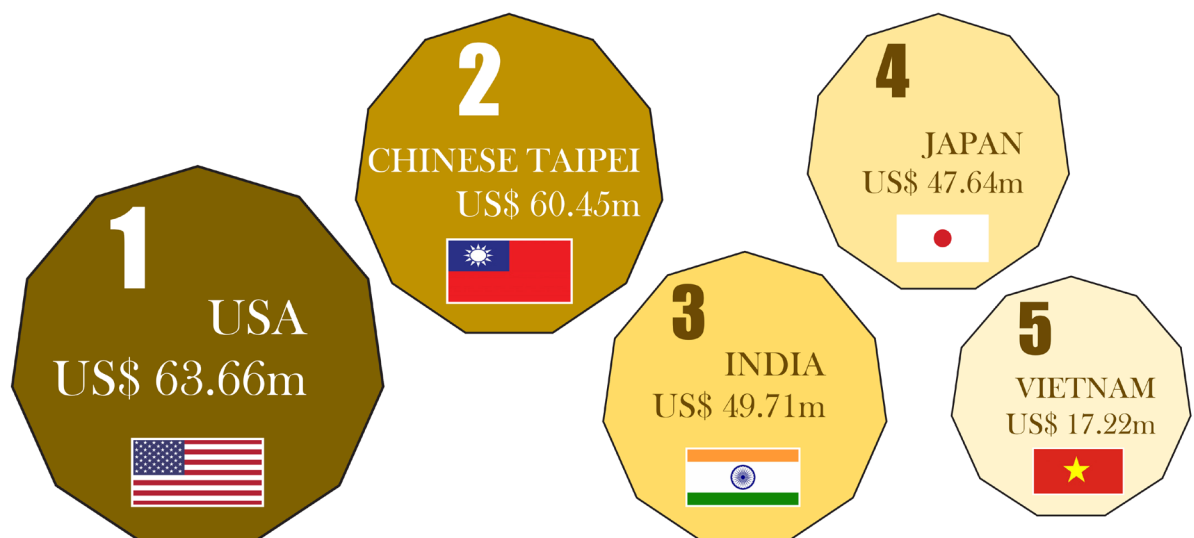
Source: Performance of Wholesale & Retail Trade October 2020, Department of Statistics, Malaysia

WORLD LARGEST EXPORTER OF FERRO-MANGANESE, CONTAINING BY WEIGHT > 2% OF CARBON

In 2019, Malaysia's export of Ferro-manganese, containing by weight > 2% of carbon recorded USD 311.29 million which was 26.6% share of the world exports.



MALAYSIA'S TOP FIVE EXPORT DESTINATIONS

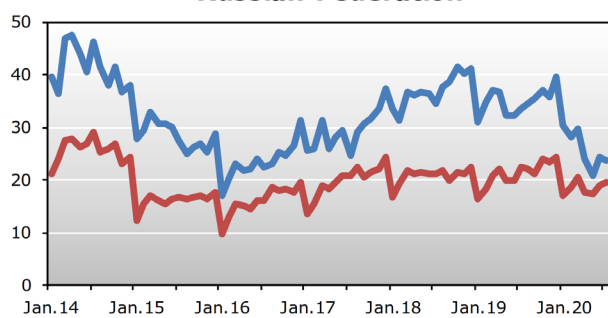


Source: <https://www.trademap.org/index.aspx>

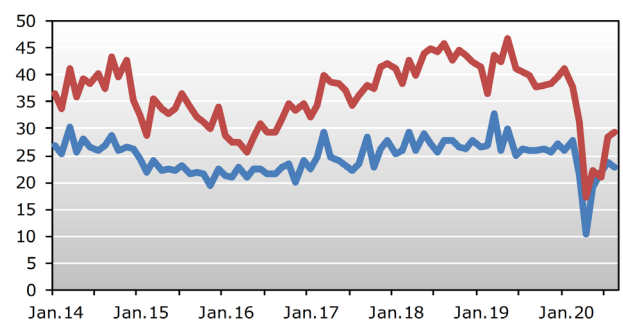
MERCHANDISE EXPORTS AND IMPORTS OF SELECTED ECONOMIES, JAN 2014 - AUG 2020 (USD Billion)

The WTO Trade monitoring report shows, monthly merchandise trade statistics in nominal US dollar terms are more timely than quarterly statistics in volume terms. These are shown in following charts for selected economies through July or August, depending on data availability. The bottoming-out of trade around May 2020 is visible in many countries, as is the recovery starting in June. However, the charts also provides a note of caution, since countries with data for the month of August appear to have suffered some minor setbacks (Brazil, India). This suggests that the trade recovery may be less than secure.

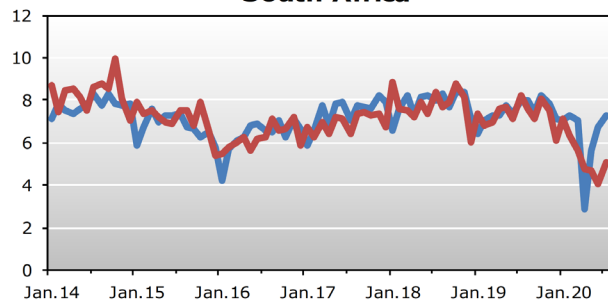
Russian Federation



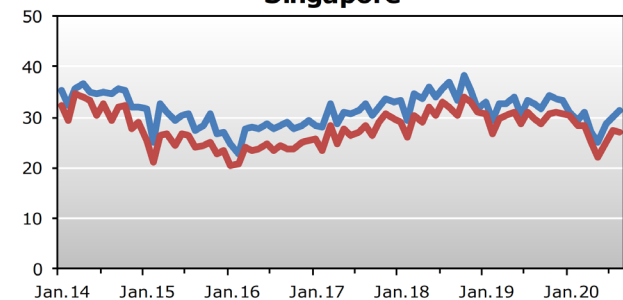
India



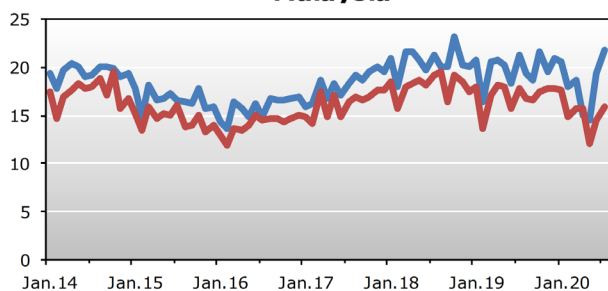
South Africa



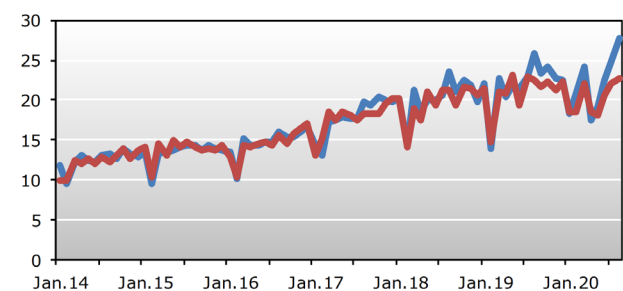
Singapore



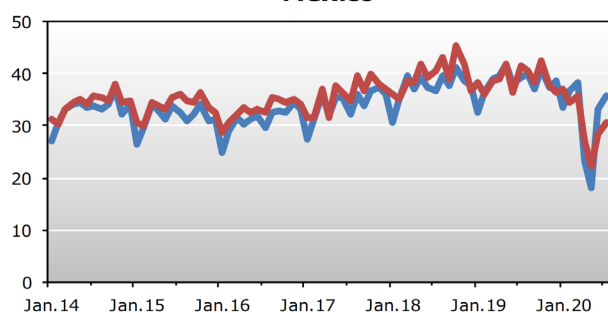
Malaysia



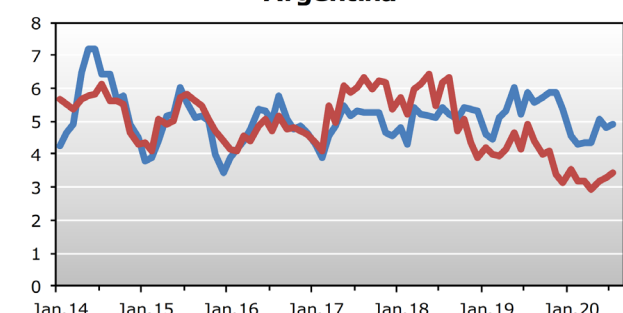
Viet Nam



Mexico



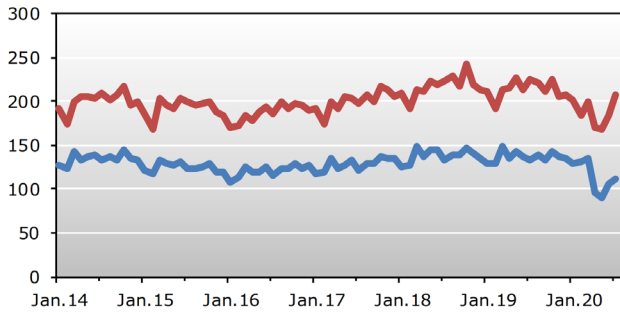
Argentina



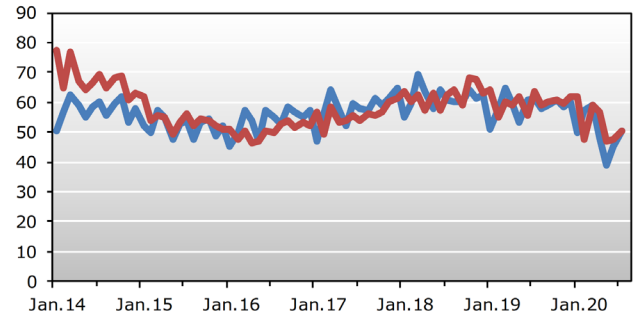
MERCHANDISE EXPORTS AND IMPORTS OF SELECTED ECONOMIES, JAN 2014 - AUG 2020 (USD Billion)

International Report

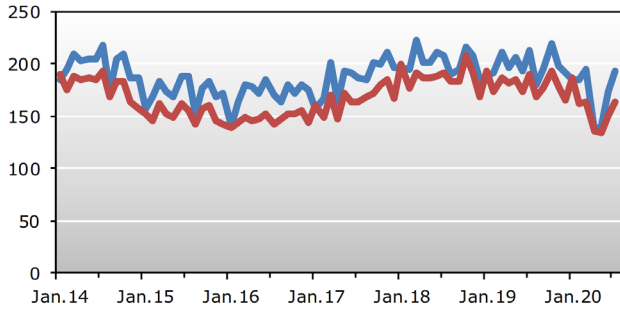
United States



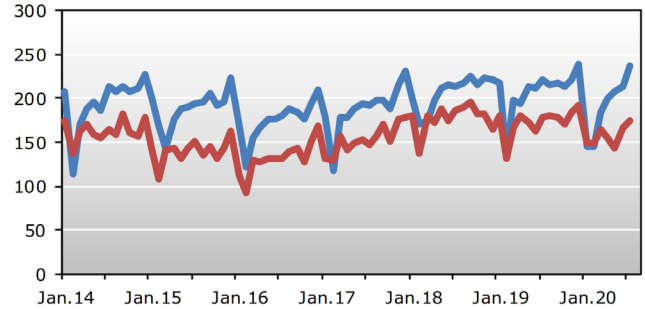
Japan



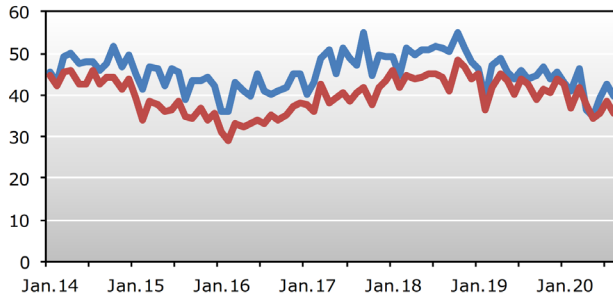
European Union (extra-trade)



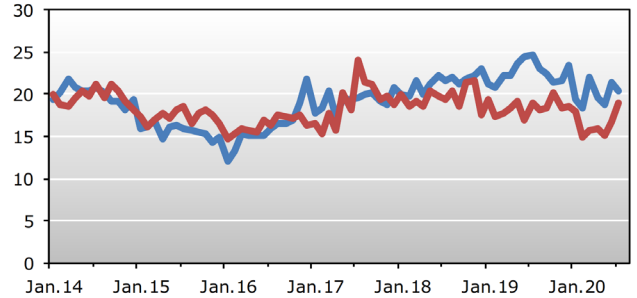
China



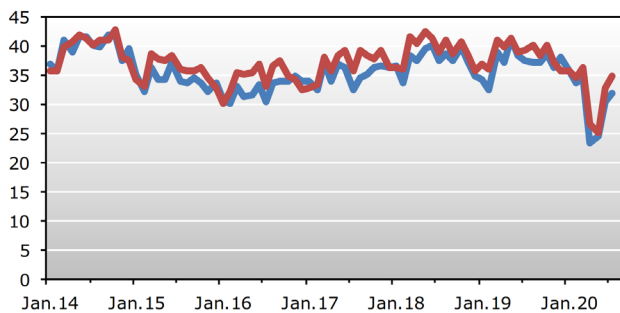
Republic of Korea



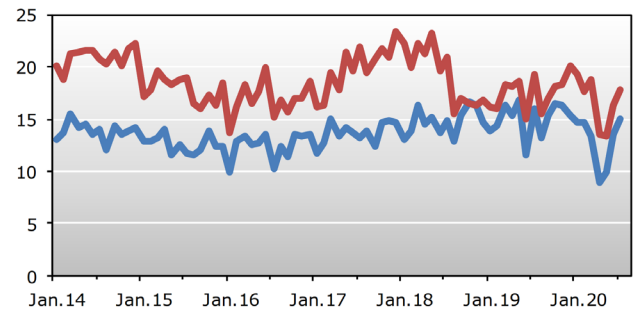
Australia



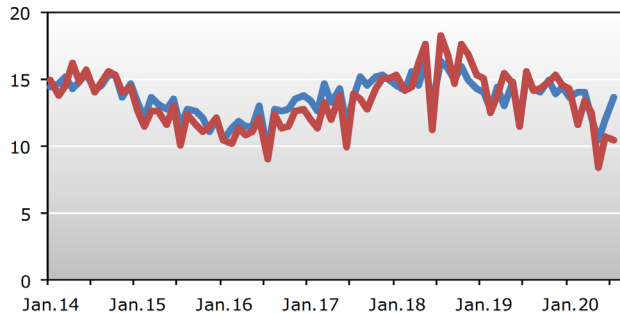
Canada



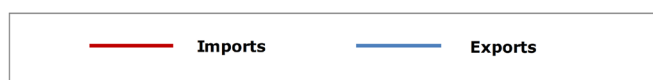
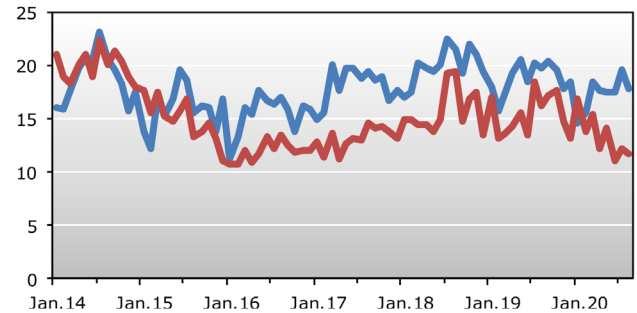
Turkey



Indonesia



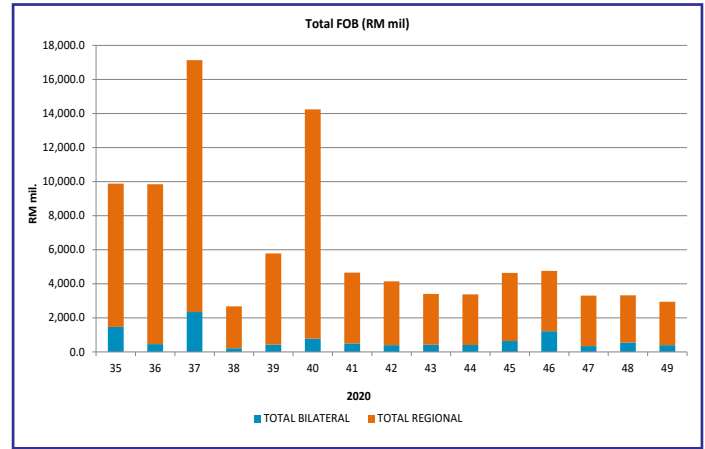
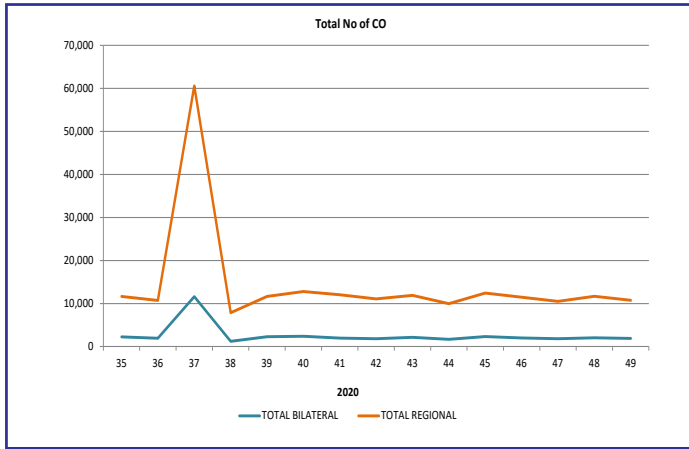
Brazil



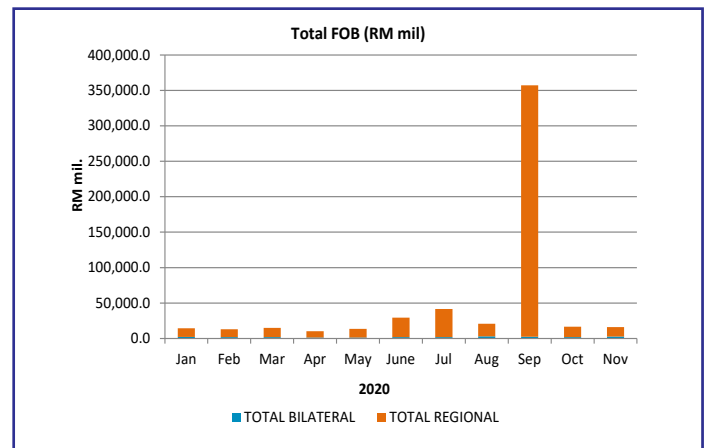
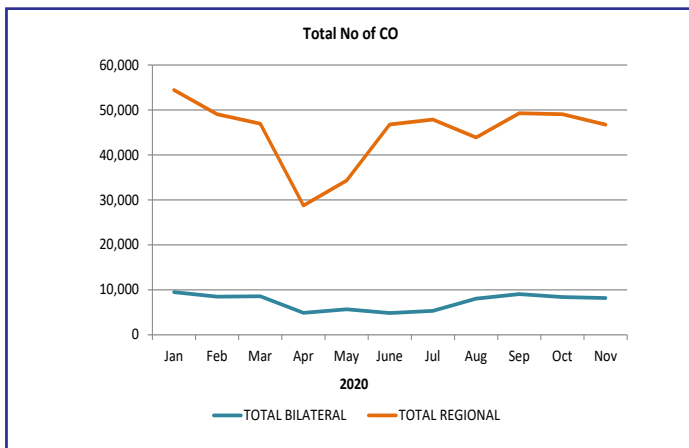
Source: WTO Trade Monitoring Report

Number and FOB Value of PCO as at 6 December 2020 Weekly / Monthly/ Annually

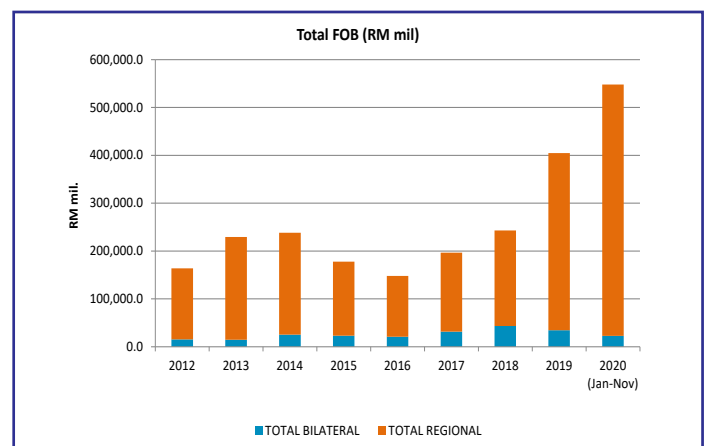
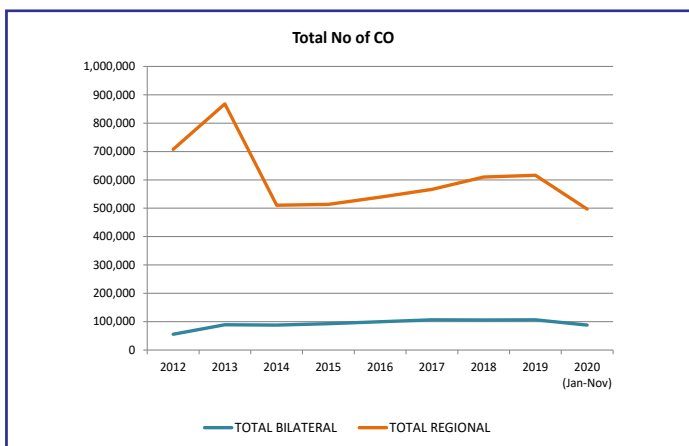
Weekly



Monthly

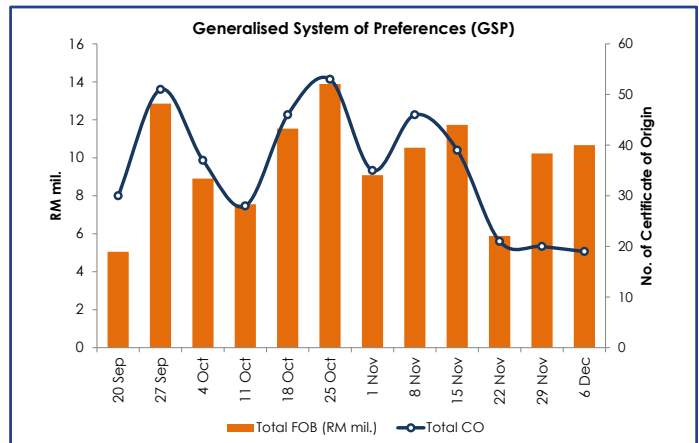
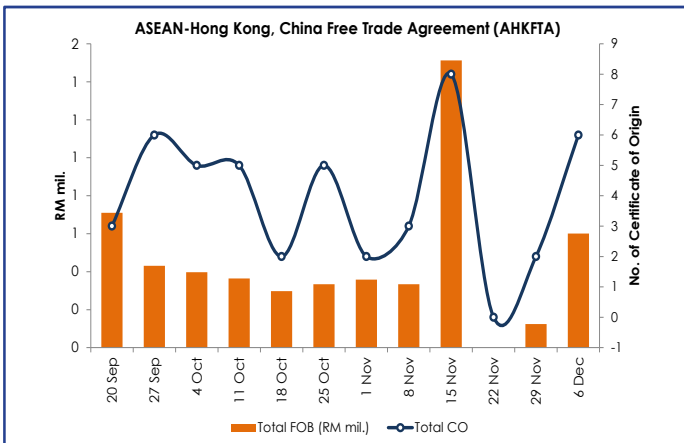
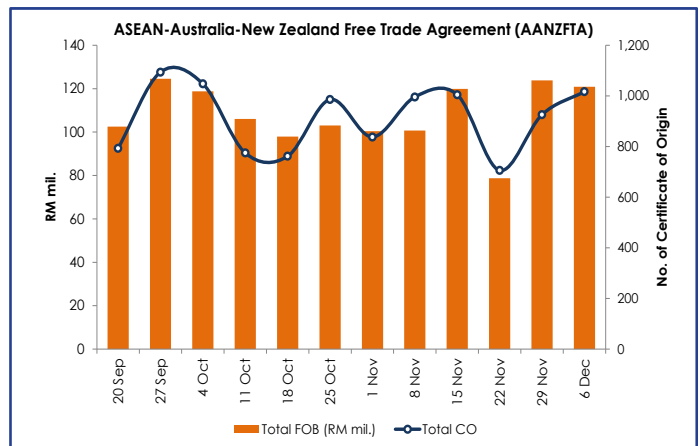
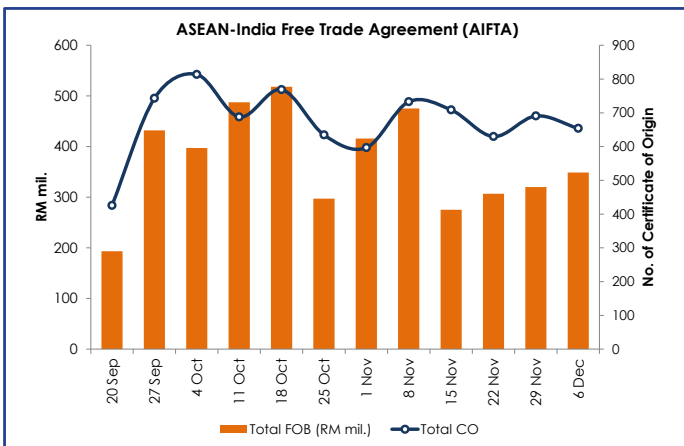
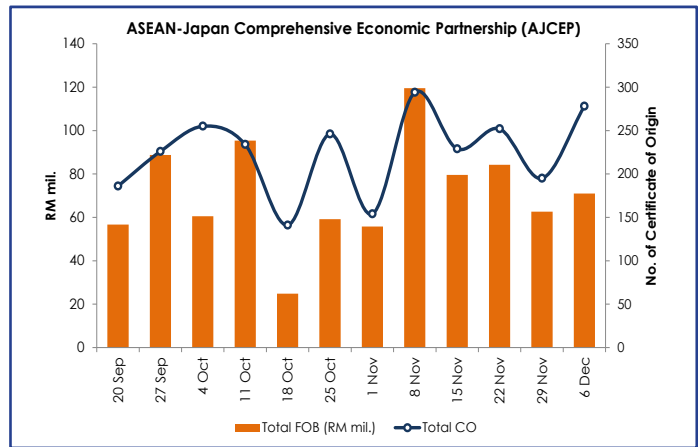
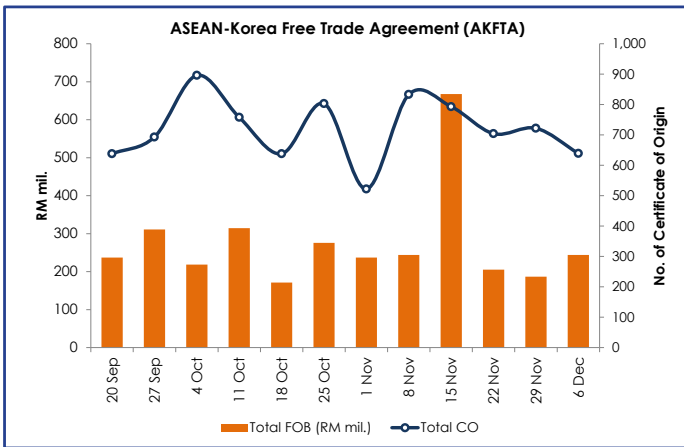
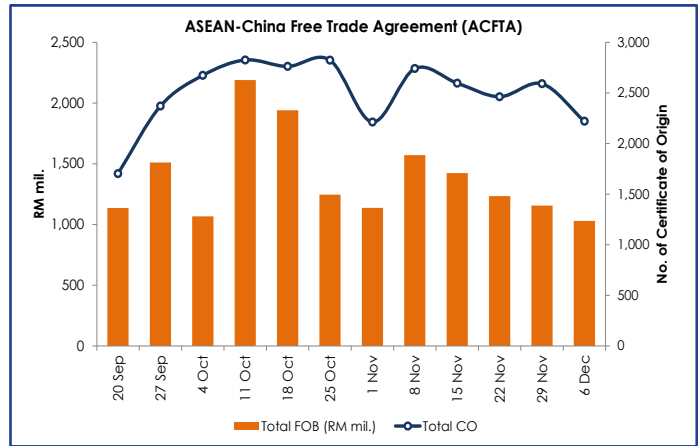
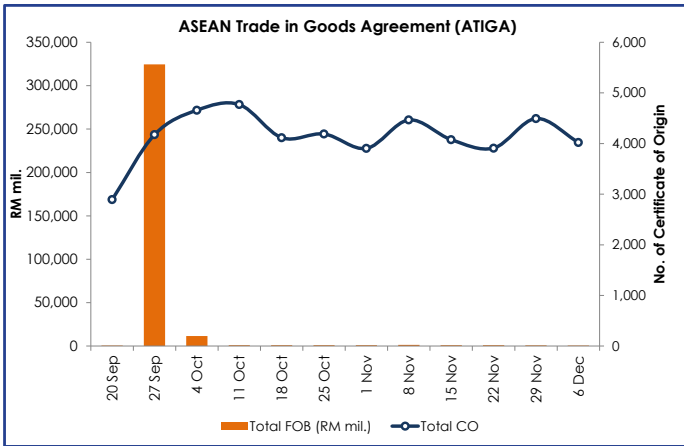


Annually



Note: *Provisional Data
Source: Ministry of International Trade and Industry, Malaysia

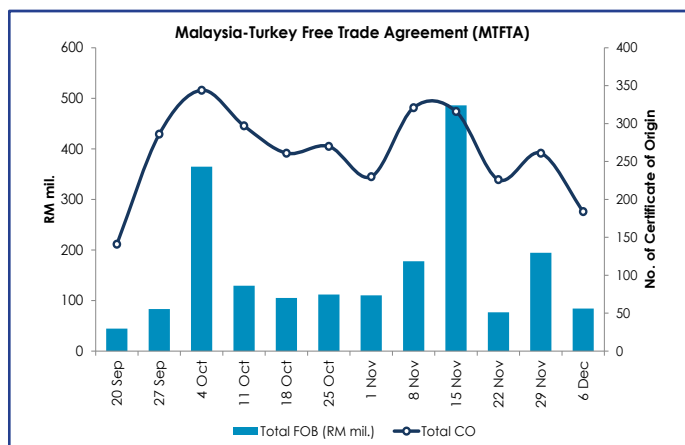
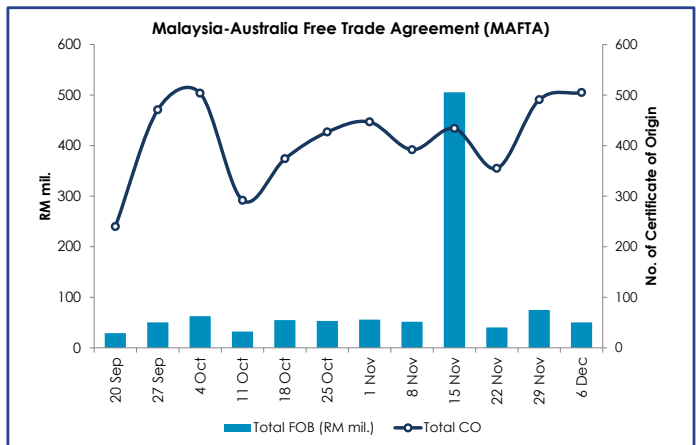
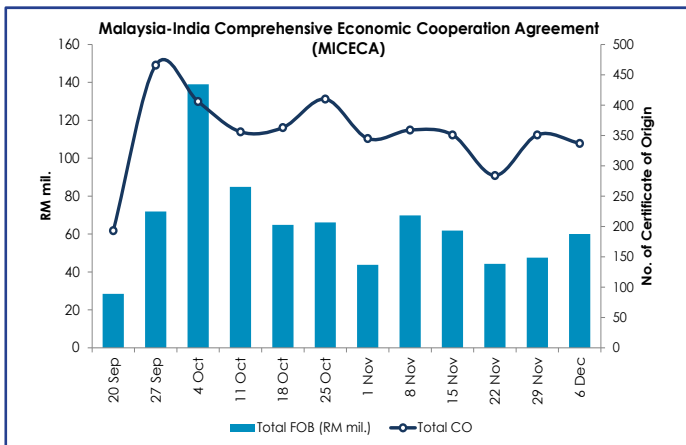
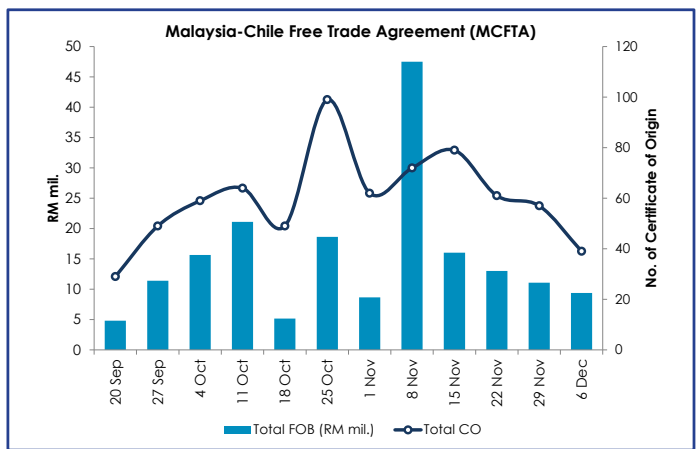
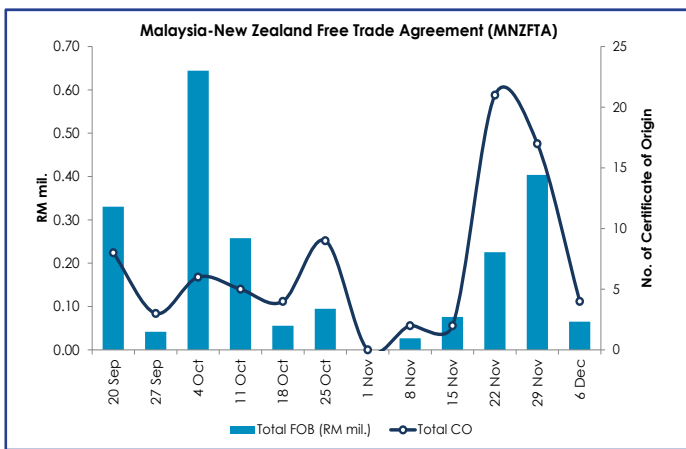
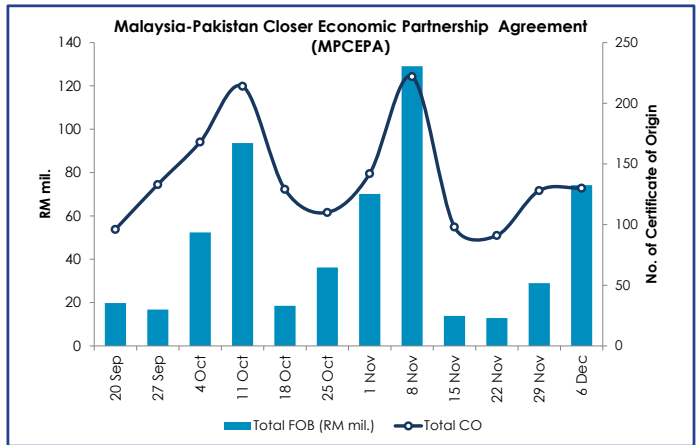
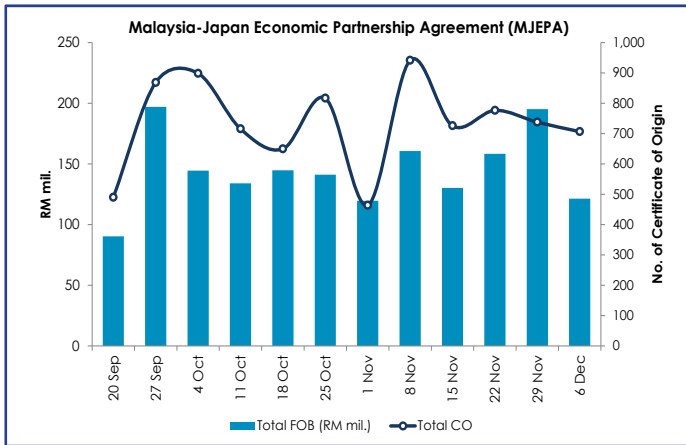
Regional FTA Number and Value of Preferential Certificates of Origin (PCOs)



Note: The preference giving countries under the GSP scheme are Liechtenstein, the Russian Federation, Japan, Switzerland, Belarus, Kazakhstan, Norway and Cambodia

Note: *Provisional Data
Source: Ministry of International Trade and Industry, Malaysia

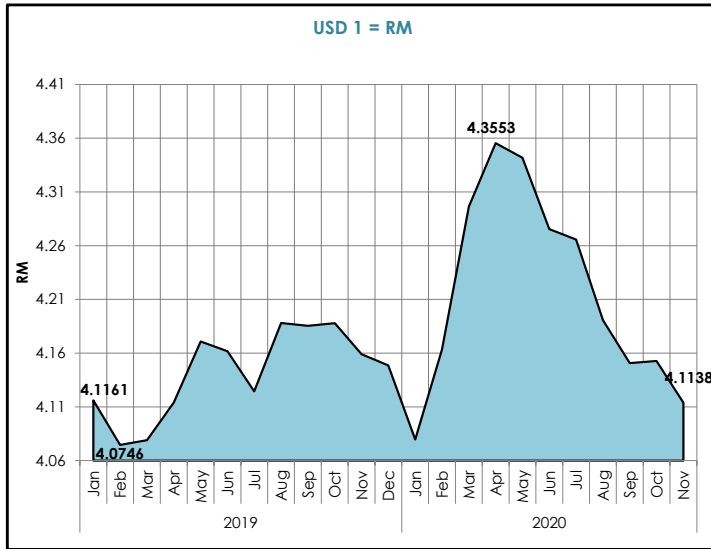
Bilateral FTA Number and Value of Preferential Certificates of Origin (PCOs)



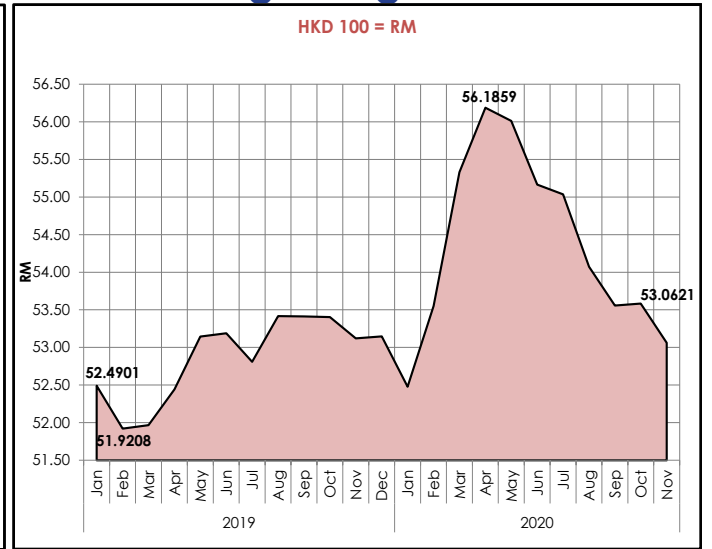
Note: *Provisional Data
Source: Ministry of International Trade and Industry, Malaysia

Malaysian Ringgit Exchange Rate with Selected Countries, January 2019 - November 2020

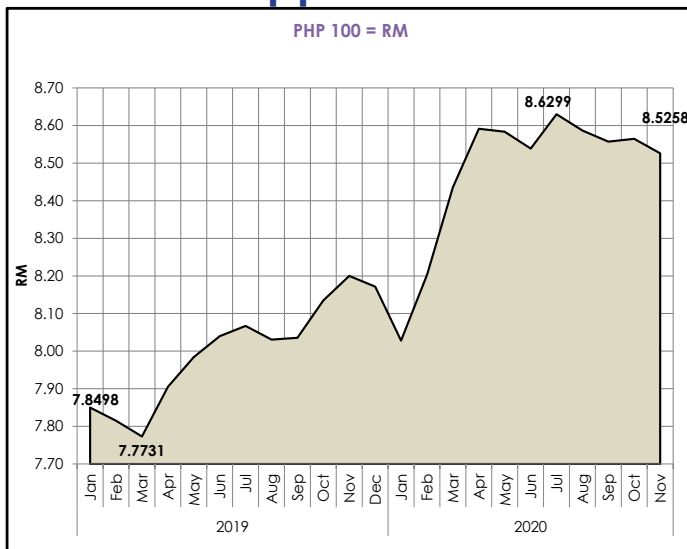
US Dollar



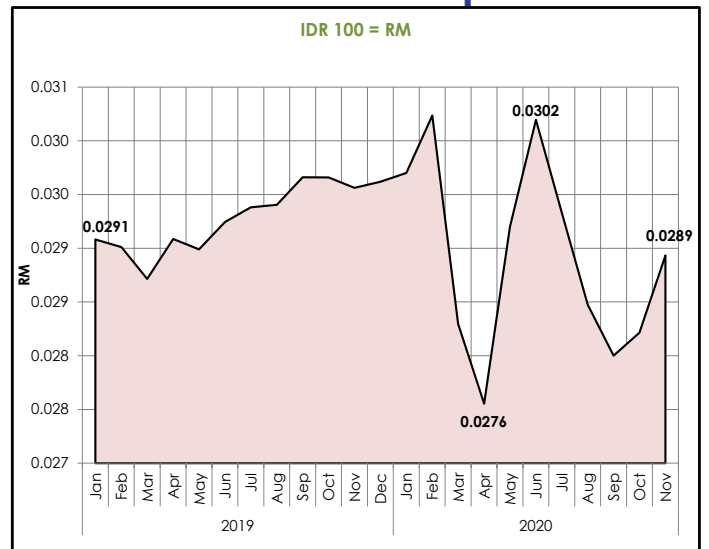
Hong Kong Dollar



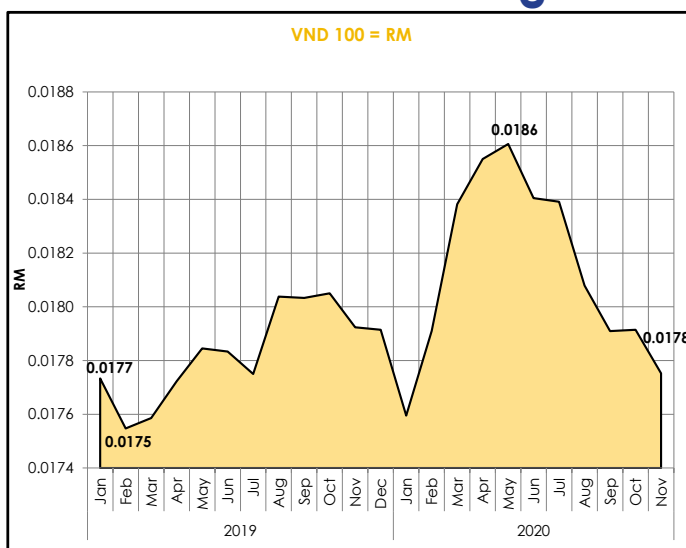
Philippine Peso



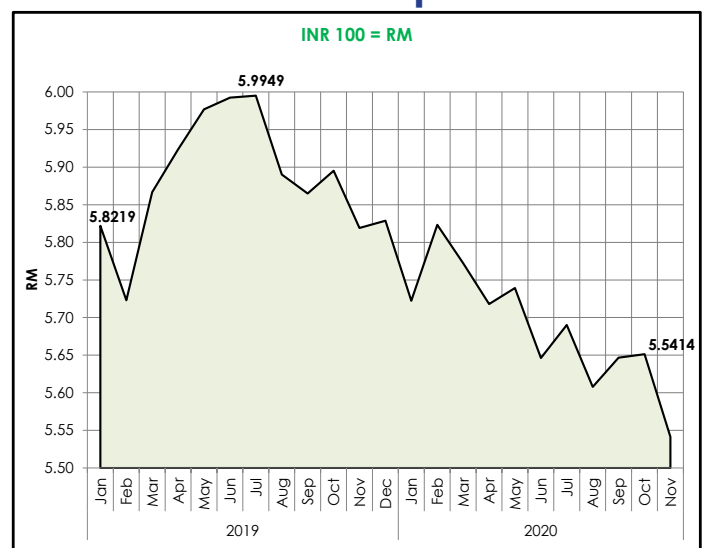
Indonesian Rupiah



Vietnamese Dong



Indian Rupee



Source : Bank Negara Malaysia

Commodity Prices

CRUDE PETROLEUM (BRENT) -per bbl-



▲ 1.5%*
US\$50.0
11 Dec 2020

Highest
2019/2020

03 Jan 2020 : US\$68.6
17 May 2019 : US\$72.2

24 Apr 2020 : US\$21.4
09 Aug 2019 : US\$54.5

Lowest
2019/2020

Average Price 2019ⁱ: US\$64.2

CRUDE PALM OIL -per MT-



▲ 2.0%*
US\$903.8
11 Dec 2020

Highest
2019/2020

11 Dec 2020 : US\$903.8
27 Dec 2019 : US\$794.5

8 May 2020 : US\$473.0
26 Jul 2019 : US\$488.5

Lowest
2019/2020

Average Price 2019ⁱ: US\$557.1

RUBBER SMR 20 -per MT-



▼ 3.9%*
US\$1,553.0
11 Dec 2020

Average Price 2019ⁱ: US\$1,414.6

COCOA SMC 2 -per MT-



▼ 2.2%*
US\$1,479.8
11 Dec 2020

Average Price 2019ⁱ: US\$1,592.4

SUGAR -per lbs-



▼ 0.1%*
US\$14.4
11 Dec 2020

Average Price 2019ⁱ: US\$12.4

COAL -per MT-



▲ 28.0%*
US\$65.0
11 Dec 2020

Average Price 2019ⁱ: US\$56.5

SCRAP IRON HMS -per MT-



⊖ %*
US\$390.0
(high)
11 Dec 2020

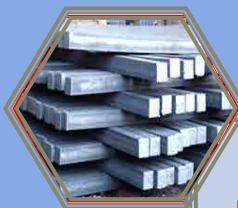
⊖ %*
US\$350.0
(low)

Average Price 2019ⁱ: US\$316.9 (high)

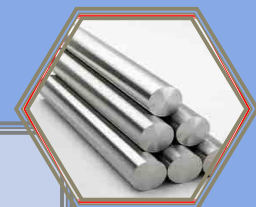
Average Price 2019ⁱ: US\$291.6 (low)

Domestic Prices

11 Dec 2020



Billets
(per MT)
RM2,050- RM2,100

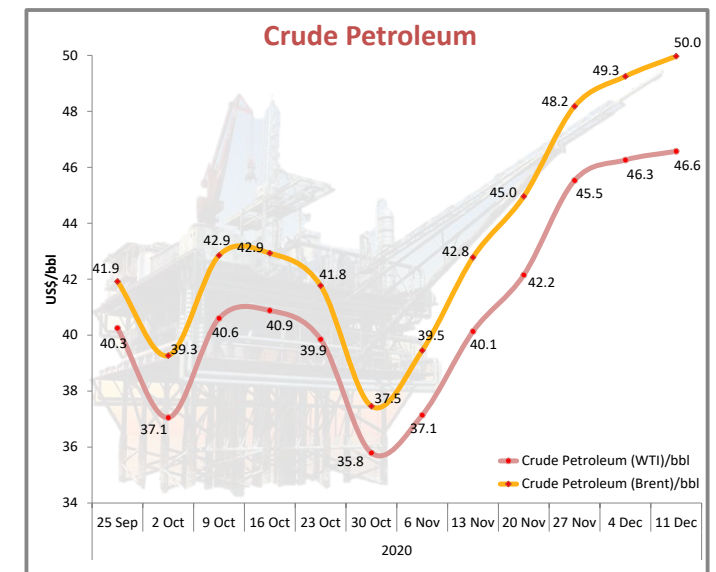
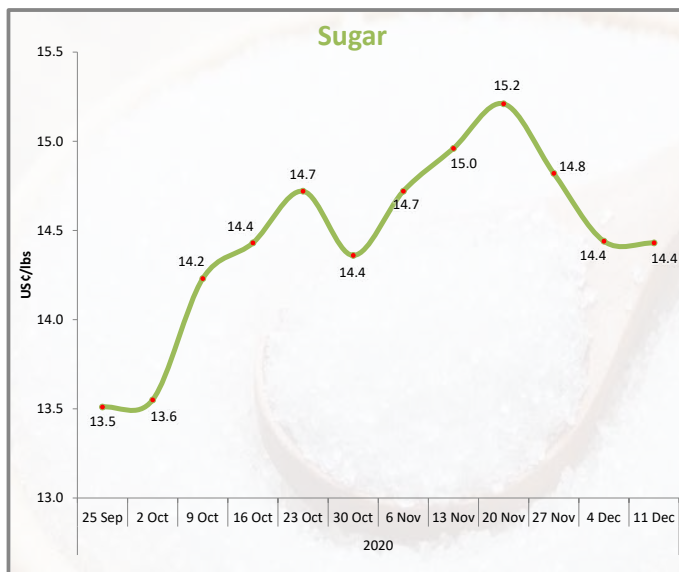
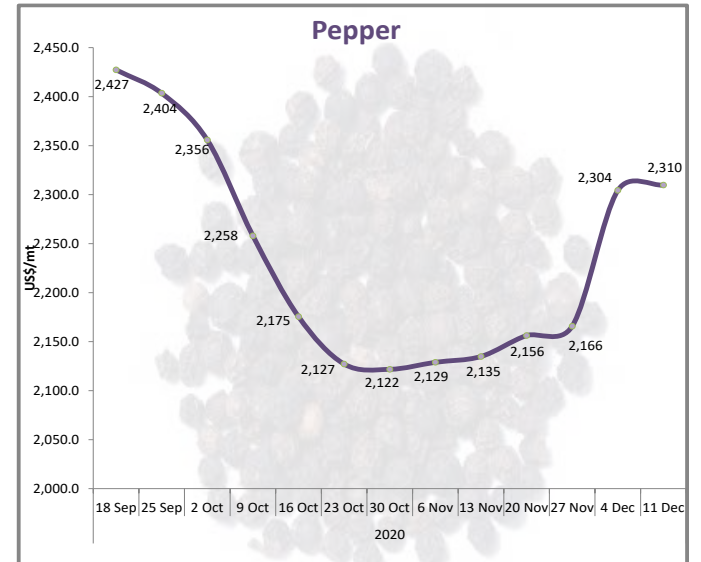
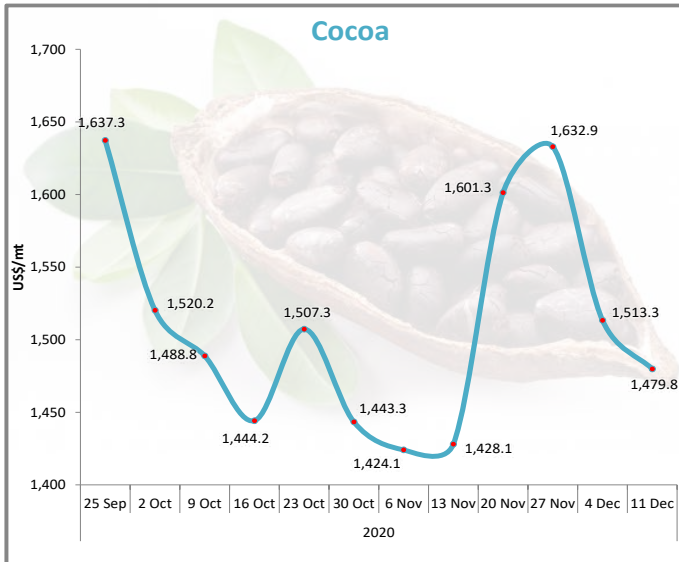
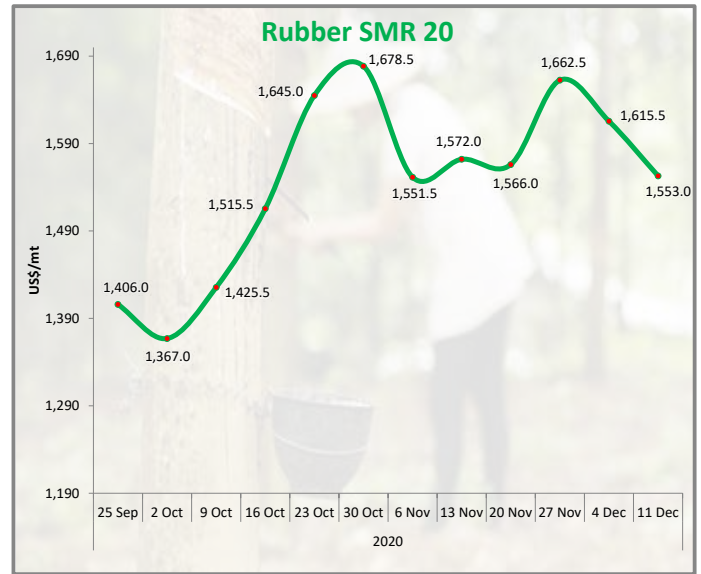
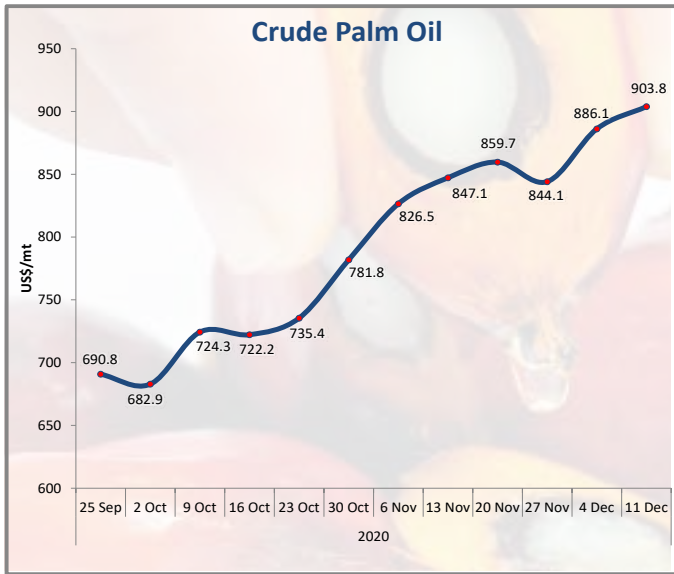


Steel Bars
(per MT)
RM2,200 – RM2,300

Notes: All figures have been rounded to the nearest decimal point
* Refer to % change from the previous week's price
i Average price in the year except otherwise indicated

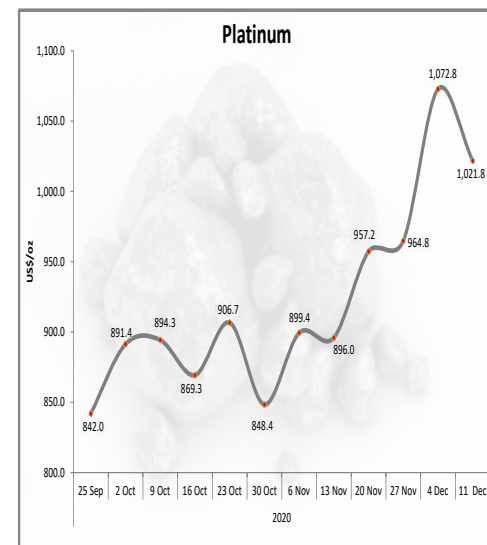
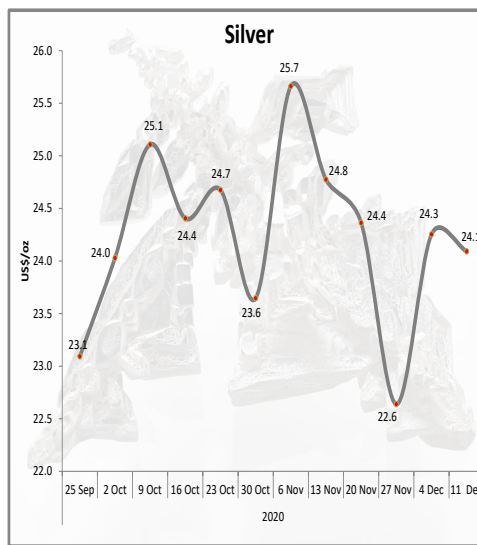
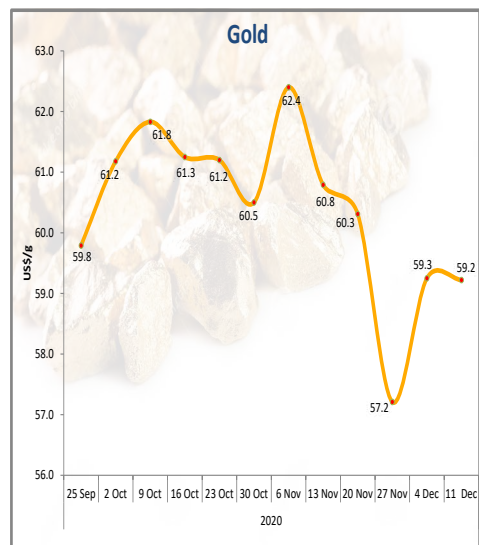
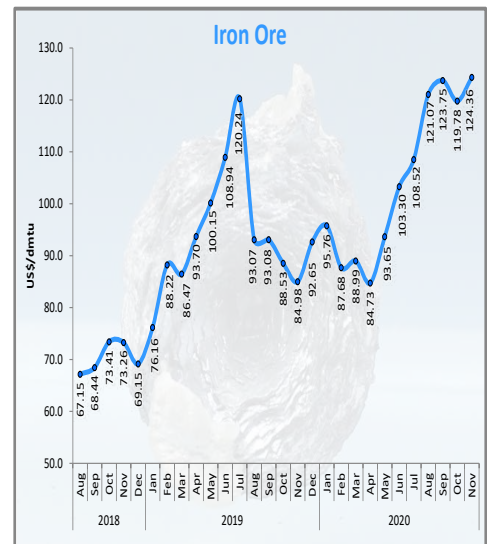
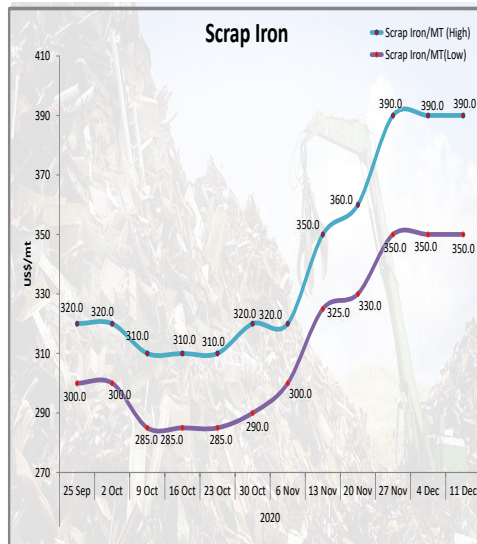
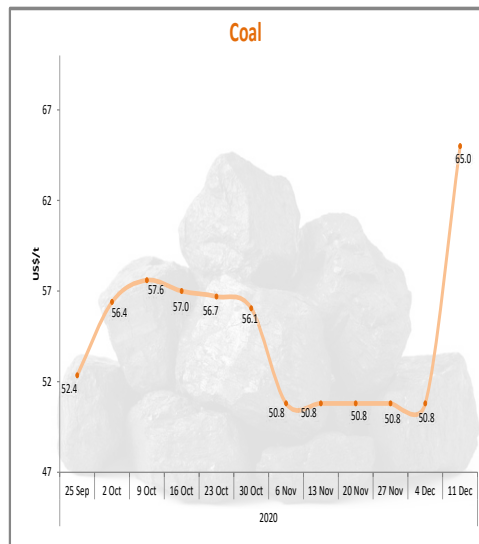
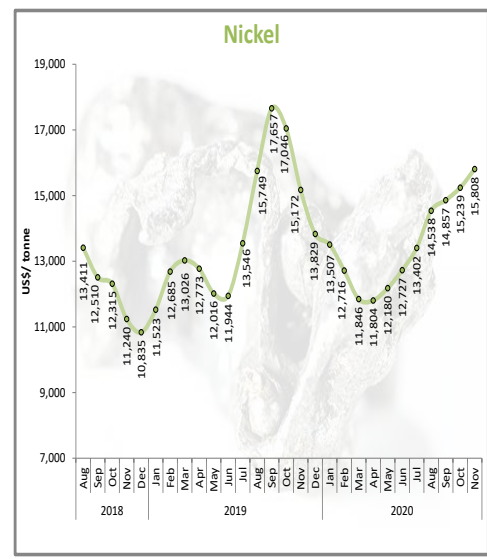
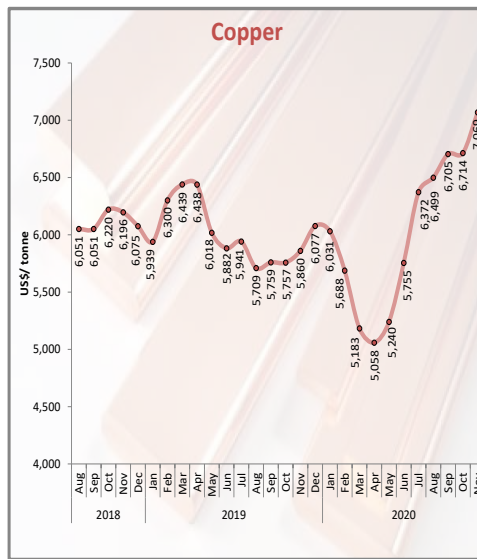
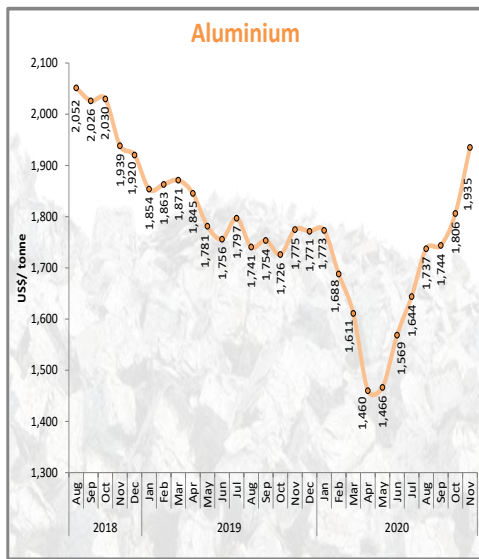
Sources: Ministry of International Trade and Industry Malaysia, Malaysian Palm Oil Board, Malaysian Rubber Board, Malaysian Cocoa Board, Malaysian Iron and Steel Industry Federation, and Bloomberg.

Commodity Price Trends



Sources: Ministry of International Trade and Industry Malaysia, Malaysian Palm Oil Board, Malaysian Rubber Board, Malaysian Cocoa Board, Malaysian Pepper Board, Bloomberg and Czarnikow Group, World Bank, World Gold Council, The Wall Street Journal.

Commodity Price Trends



Sources: Ministry of International Trade and Industry Malaysia, Malaysian Iron and Steel Industry Federation, Bloomberg and Czarikow Group, World Bank, World Gold Council, The Wall Street Journal.



INDUSTRY4WRD RELATED INCENTIVES

Having the extra capital allows SMEs to flourish and prosper. Find the suitable fund for your company.

01 | LOANS

Soft Loan Scheme for Automation and Modernisation (SLSAM)

- targets manufacturing sectors
- 4.0% interest rate per annum for SMEs
- www.midf.com.my

Industry Digitalisation Transformation Fund (IDTF)

- targeted sectors: AI, Robotics, Automation etc.
- provides a 2% interest rate subsidy
- www.bpmb.com.my

Coming Soon!

1. Intervention Fund*
 - 70:30 matching grant up to RM500,000.
2. Industry4WRD DISF*
 - 60:40 matching grant

*participation in Industry4WRD RA is a prerequisite to apply

Domestic Investment Strategic Fund (DISF)

- 50:50 matching grant to companies adopting Industry 4.0 enabling technologies
- targets manufacturing and services sectors
- www.mida.gov.my

02 | GRANTS

Digital Transformation Acceleration Program (DTAP) Pilot Grant

- 1:1 matching grant
- targets large corporate and mid-tier companies in Malaysia
- assists companies to tap on the expertise of Digital Transformation Labs (DTL)
- www.mdec.my

Automation Capital Allowance (Automation CA)



For Labour Intensive Industries:

- Automation CA of 200% on the first RM4 million expenditure incurred within 5 years

For other industries:

- Automation CA of 200% on the first RM2 million expenditure incurred within 5 years
- www.mida.gov.my

For more information, kindly click the following links:

https://www.miti.gov.my/index.php/pages/view/industry4WRD?mid=559#tab_547_2202



MINISTRY OF INTERNATIONAL TRADE AND INDUSTRY

INDUSTRY4WRD READINESS ASSESSMENT

Get your firm assessed. Be ready for Industry 4.0.

All you need to know about Industry4WRD RA



What is it?

Trained assessors will help you to understand your readiness for Industry 4.0 and make recommendations on where to start your transformation.

Who is eligible? ✓ Manufacturing and its related services sector



- ✓ Incorporated under the Companies Act (1965/2016)/ Registration of Business Act (1956)
- ✓ Hold a valid license
- ✓ In operation for more than 3 years

What are the benefits?



To identify areas of improvement in terms of people, process and technology.



Receive comprehensive readiness report.



Be entitled to apply for financial incentives.



Process Flow

A FEW SIMPLE STEPS

Incentives for RA

- 500 SMEs will be selected for free assessment.
- Others will get tax exemption on RA fees up to RM27k.



Enquiries

- General: i4.0@miti.gov.my
- RA: industry4wrd@mpc.gov.my



Readiness Assessment



Apply online at www.miti.gov.my/industry4wrd



Evaluation by Committees



Onsite Assessment



Receive RA Report

Business Intervention



Develop Intervention Proposal



Apply for Financial Incentives



Implement the Intervention Plan

For more information, kindly click the following links:

<https://www.miti.gov.my/index.php/pages/view/industry4WRD>



Get connected with businesses from all around the APEC region through #MyAPEC2020 virtual exhibition

1 September - 31 December 2020
www.myapec2020.matrade.gov.my



We are doing things differently in today's world. MITI, through our agency, MATRADE HQ, is organising a virtual exhibition, the first-of-its-kind in Malaysia, called #MyAPEC2020 Exhibition, in conjunction with Malaysia hosting the @APEC 2020. The virtual exhibition, scheduled for Sept 1 to Dec 31, will showcase products and services from Malaysia and other APEC - Asia-Pacific Economic Cooperation member economies. The virtual exhibition is a great platform for APEC economies to expand their outreach and can be accessed through myapec2020.matrade.gov.my or the APEC portal and Matrade website.

KEMENTERIAN PERAGANGAN ANTARABANGSA DAN INDUSTRI

ANNOUNCEMENT

WORK FROM HOME (WFH) INSTRUCTIONS ARE STILL APPLICABLE THROUGHOUT THE EXTENDED CMCO PERIOD

The WFH instructions announced earlier is still applicable to all office management and supervisory roles. Should this group of workers are required to be present at the office, only 10% of them are allowed to do so starting from 10.00am - 2.00pm for 3 days a week.

#STAYCALM #BARISANHADAPANEKONOMI

21 Oktober 2020

KEMENTERIAN PERAGANGAN ANTARABANGSA DAN INDUSTRI

Dasar Bekerja Dari Rumah (BDR) @ Work From Home (WFH)

Wajib bagi kakitangan pengurusan dan penyeliaan di kawasan yang sedang menjalani PKPB

bermula **22 Oktober 2020**

21 Oktober 2020

KEMENTERIAN PERAGANGAN ANTARABANGSA DAN INDUSTRI

Pekerja daripada kumpulan pengurusan dan penyeliaan yang boleh hadir ke pejabat jika perlu:

KAPASITI 10 PERATUS SAHAJA DARIPADA SKOP TUGAS DI BAWAH

- Perakaunan
- Perundangan
- Kewangan
- Perancangan
- Pentadbiran
- ICT

Had berada di pejabat 4 jam sahaja
10.00 pagi - 2.00 petang (3 hari bekerja dalam seminggu)

21 Oktober 2020

KEMENTERIAN PERAGANGAN ANTARABANGSA DAN INDUSTRI

Contoh situasi amalan Bekerja Dari Rumah (BDR)

Syarikat A terlibat dalam industri pembuatan. Syarikat ini mempunyai:

- ▶ 1000 pekerja operasi
- ▶ 100 pekerja kumpulan pengurusan dan penyeliaan pejabat.

Siapa perlu BDR?

1000 pekerja operasi boleh bekerja seperti biasa dan tidak perlu BDR

10 peratus atau 10 orang daripada kumpulan pengurusan dan penyeliaan pejabat boleh datang bekerja.

21 Oktober 2020

KEMENTERIAN PERAGANGAN ANTARABANGSA DAN INDUSTRI

Aplikasi yang boleh membantu anda kekal produktif walau bekerja dari rumah.

KEMENTERIAN PERAGANGAN ANTARABANGSA DAN INDUSTRI

Aplikasi persidangan video seperti Zoom, Google Meets dan Microsoft Teams.



Simpan dokumen dan fail di laman web seperti Dropbox, Google Drive dan Microsoft Teams.




Kukuhkan pengetahuan anda tentang teknologi digital di MDEC Digital Accelerator Portal.

dx.com.my




8 business operation areas that SMEs could apply digital solutions




-  **Electronic Point of Sale System**
-  **Human Resource Management**
-  **Customer Relationship Management System**
-  **Procurement System**




-  **Enterprise Resource Planning/Tax Accounting**
-  **Digital Marketing/Sales**
-  **e-Commerce**
-  **Remote Working**




For more info on digital solutions, visit MDEC Accelerator Portal

dx.com.my/en/solutions/





MITI Call Center
03-6208 4949



MITIMalaysia



MITIMalaysiayoutube



www.miti.gov.my

Bagi sebarang pertanyaan berkaitan MITI seperti operasi sektor ekonomi atau amalan BDR/WFH sila hubungi talian hotline MITI seperti di atas.

MITI POCKET TALK

A SERIES OF SESSION FOR THE PRIVATE SECTOR

When? Once a month

Where? MITI Tower Kuala Lumpur or MITI Regional Offices

Information on the benefits of **Free Trade Agreements (FTAs)** and current updates

Introduction on **Preferential Certificates of Origin (PCO)** application procedures

For more information, please contact :



03-6200 0468 / 69 / 57



allaki@miti.gov.my

OPTIMISING HUMAN POTENTIAL TOWARDS FUTURE OF SHARED PROSPERITY

#MyAPEC2020



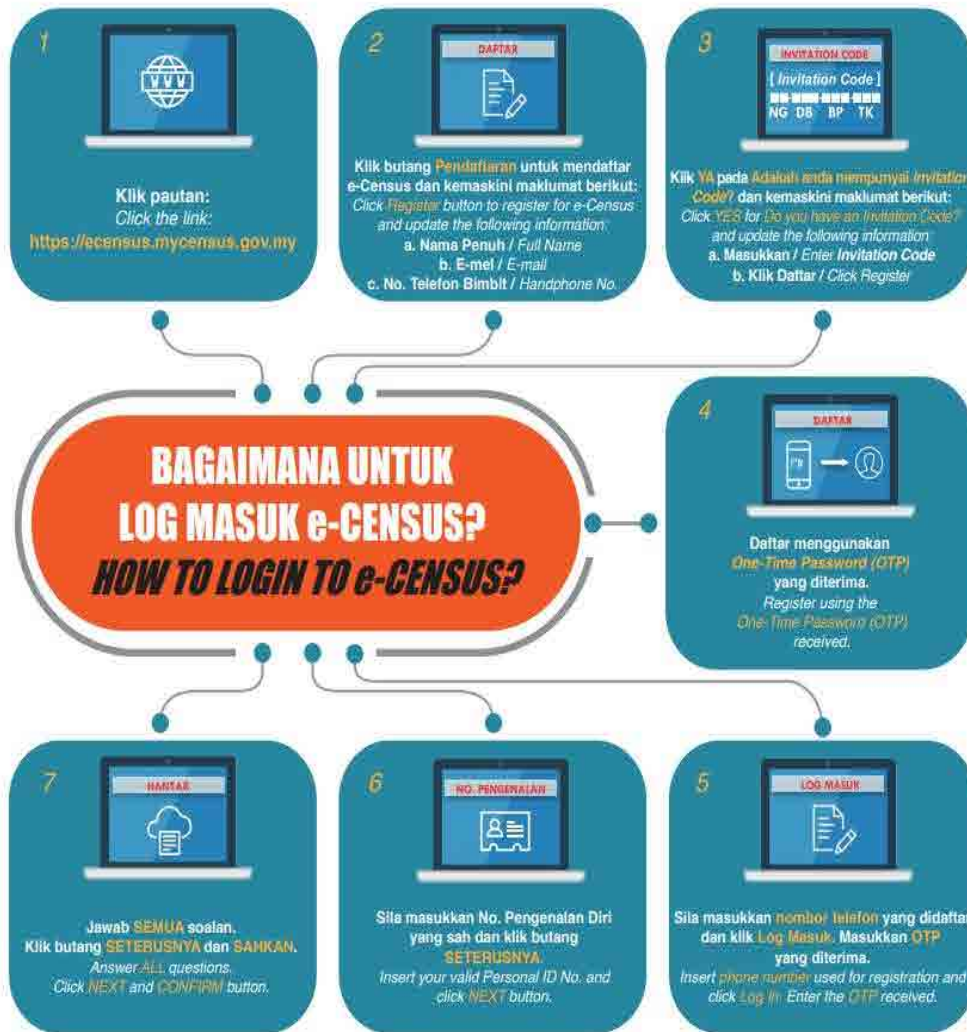
Asia-Pacific
Economic Cooperation



APEC 2020
MALAYSIA

For more information, kindly click the following links:

<https://www.myapec2020.my/en/>



BAGAIMANA UNTUK LOG MASUK e-CENSUS?
HOW TO LOGIN TO e-CENSUS?

Sebarang pertanyaan atau maklum balas, sila hubungi pegawai berikut:
Any question(s) or feedback, please contact the following officer:

Pembanci / Enumerator:

No. Telefon Pembanci / Enumerator Contact No.:

DATA ANDA MASA DEPAN KITA
YOUR DATA IS OUR FUTURE

www.mycensus.gov.my

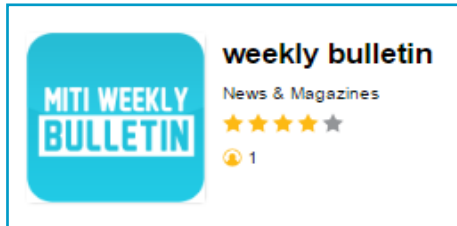
Hotline MyCensus 2020
1-800-88-7720

Sila abaikan notis ini sekiranya anda telah menjawab Soal Selidik Banci 2020 secara atas talian.
Kindly disregard this notice if you have answered the MyCensus 2020 questionnaire online.

For more information, kindly click the following links:
<http://www.mycensus.gov.my>

Announcements

MITI Weekly Bulletin (MWB) Mobile Apps



MITI MWB APPs is now available for IOS, Android and Windows platforms.

MWB APPs can be downloaded from Gallery of Malaysian Government Mobile APPs (GAMMA) at the link: <http://gamma.malaysia.gov.my/#/appDetails/85>



Dear Readers,

Kindly click the link below for any comments in this issue. MWB reserves the right to edit and republish letters as reprints.

<http://www.miti.gov.my/index.php/forms/form/13>